

SYDNEY PORTS CORPORATION

Handbook

5th Edition 2004–2007



The Sydney Ports Handbook is the complete guide to doing business in Sydney's ports and provides contact details and information on port service providers.

Sydney Ports is always seeking to improve its communications with customers and the port community. We welcome your feedback on the Handbook through enquiries@sydneyports.com.au



Sydney Harbour port facilities



KEY

- A** Overseas Passenger Terminal
- B** Patrick Corporation
- C** Wharf 8 Passenger Terminal
- D** White Bay
- E** Penrice Soda Products
- F** Australian Amalgamated Terminals

- G** Cement Australia
- H** Sugar Australia
- I** Gypsum Resources Australia
- 1-8** Berth Numbers
- Sydney Ports' Property

Port Botany port facilities



KEY

- A P&O Trans Aust. Holdings Ltd
- B Vopak Terminals
- C Orica Australia Pty Ltd
- D Elgas
- E Terminals Pty Ltd
- F Origin Energy LPG Limited
- G Patrick Port Services

- J P&O Ports
- K Patrick Corporation
- L Caltex Petroleum Pty Ltd
- M Australian Customs Services
- N Warehouse Solutions International Pty Ltd
- O Randwick City Council
- Berth Numbers
- Sydney Ports' Property

NSW road and rail links



KEY

- Main roads
- - - Rail lines
- ▲ Intermodal Terminals

Metropolitan road and rail links



KEY

- Motorways
- Main roads
- - - Rail lines
- Dedicated rail freight lines
- ▲ Intermodal Terminals
- Industrial zones
- Port facilities
- ▲ Enfield site
- ▨ Proposed Port Botany development area
- ⋯ Western Sydney Orbital (under construction)

A guide to doing business in Sydney's Ports

Sydney Ports Corporation, the port authority managing
Sydney Harbour and Botany Bay



Contents

Sydney Ports Corporation

- 6 Front door to the nation
- 8 About us
- 9 Organisation
- 10 Sydney Pilot Service
- 11 Australia's gateway to trade
- 11 *Sydney Harbour*
- 11 *Port Botany*
- 12 Trade statistics
- 14 Emergency response
- 15 Environment
- 16 Passenger vessel facilities
- 17 Port Procedures Guide
- 17 *Wave, wind and tide*
- 18 Port security

Sydney Harbour

- 21 Navigation and operating information
- 22 Darling Harbour Passenger Terminal
- 23 Overseas Passenger Terminal
- 24 Darling Harbour
- 24 *Darling Harbour Berths 3 to 7*
- 24 *Darling Harbour Berth 3*
- 25 *Darling Harbour Berth 4*
- 25 *Darling Harbour Berth 5*
- 25 *Darling Harbour Berth 7*
- 26 Glebe Island
- 26 *Glebe Island Berths 1 and 2*
- 27 *Glebe Island Berths 7 and 8*
- 28 *Glebe Island Berth 8*
- 29 White Bay
- 29 *White Bay Berths 2 to 6*
- 30 Private facilities
- 30 *Gore Bay Terminal*
- 31 *Blackwattle Bay*

Port Botany

- 33 Navigation and operating information
- 34 Container terminals
- 34 *P&O Port Botany Container Terminal*
- 35 *Patrick Terminal*
- 36 Bulk Liquids Berth and storage facilities – **users**
- 36 *VOPAK*
- 37 *Site A facilities (chemical terminal)*
- 37 *Site B facilities (petroleum terminal)*
- 38 *Origin Energy*
- 38 *Orica Australia Pty Ltd*
- 39 *Terminals Pty Ltd*
- 39 *Elgas Ltd*

Services directory

Port Botany continued

- 40 Container parks
- 40 *MT Movements Pty Ltd*
- 40 *P&O Port Botany Container Park/Rail Facility*
- 40 *Patrick Logistics Botany Park*
- 41 *VOPAK Dangerous Goods Container Park*
- 41 *P&O Molineux Point Warehouse Facility*
- 42 Packing/unpacking warehousing facilities
- 42 *P&O Port Botany Freight Station*
- 42 *Patrick Logistics 'Botany Depot'*
- 42 *Patrick Logistics 'Bumbarah Depot'*
- 43 *Warehouse Solutions International Pty Ltd*
- 44 Other facilities
- 44 *Australian Customs Service Container Examination Facility*
- 44 *Randwick City Council Recycling Facility*
- 45 Private facilities
- 45 *Kurnell (south side of Port Botany)*
- 45 *Caltex Refineries (NSW) Pty Ltd*

Navigation services directory

- 47 *Sydney's Integrated Port System (ShIPS)*
- 47 *Pilotage*
- 48 *Towage*
- 49 *Australian Maritime Services*
- 49 *Ausport Marine*
- 49 *Polaris Marine Pty Ltd*
- 50 *Ship repair facilities – ADI Limited*

Section 1

- 54 Agents and Lines
- 61 Port Service Providers
- 62 Cruise Shipping Lines

Section 2

- 66 Customs Brokers
- 66 Freight Forwarders
- 67 Rail Transport Operators
- 68 Road Transport Operators
- 68 Cold Storage
- 69 Container Parks
- 72 Bulk Liquid Storage and Services
- 73 Other Ship and Cargo Service Providers
- 74 Marine Insurers
- 75 Maritime Lawyers
- 75 NSW Government Agencies
- 75 Federal Government Agencies
- 75 Sydney Consulates and Trade Missions
- 76 Marine Surveyors
- 77 Mobile Crane and Handling Equipment
- 78 Shipping Providers
- 79 Shipbrokers
- 80 Shipchandlers
- 81 Container Leasing Companies
- 82 Maritime Organisations
- 83 Industry/Exporting Organisations



Sydney Ports Corporation

A large cargo ship is shown from a low angle, moving across the water. The ship's hull is dark, and its upper decks are white with various structures and railings. In the background, a city skyline with several tall buildings is visible under a clear blue sky. The water is a deep blue with some whitecaps.

Sydney Ports Corporation

Front door to the nation

Sydney's ports have been crucial to the economic development of Australia since they became the continent's first major ports more than 200 years ago.

An aerial photograph of Sydney, Australia, showing the city's dense urban landscape, the harbor, and the surrounding hills. The image is used as a background for the left side of the page.

Sydney Ports Corporation

Sydney's ports are an economic powerhouse. With 99 per cent of Australia's international trade transported by sea, Sydney's ports are pivotal to Australia's economic future.

Sydney's ports:

- contribute more than \$2.5 billion to the NSW economy;
- handle over \$50 billion worth of international and domestic trade;
- generate more than 17,000 jobs;
- handle nearly one third of Australia's total containerised trade; and
- will handle increasing amounts of trade over the next 20 years.

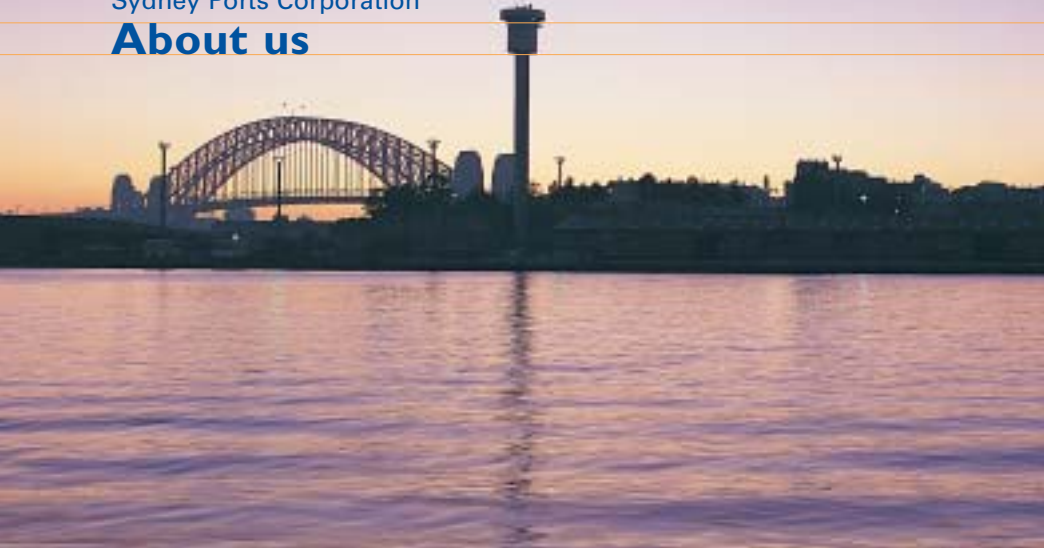
A major challenge exists in planning for the significant increase in Sydney's trade over the next two decades and beyond. Sydney Ports proposes to accommodate this trade by expanding the container facilities at Port Botany.

Sydney's ports play a major role in Australia's international gateway to seaborne trade with over 30 shipping lines servicing over 200 sailings a month to and from over 100 overseas destinations.

The ports of Sydney are a focal point of a vast network of road, rail and sea links servicing domestic and international markets. Although 85 per cent of containerised products are delivered within 40 kilometres of the ports, they are used by people from all parts of NSW, who rely on the ports for the delivery of goods and the export of product to overseas markets.

Bulk products (non-containerised) also move through the ports. These include oil, gases, dry bulk and motor vehicles.

About us



Sydney Ports Corporation is a state-owned corporation which manages the commercial ports of Sydney Harbour and Port Botany.

Its key business responsibilities include a strong focus on managing and developing the ports to cater for existing and future trade needs, navigational and operational safety and protection of the marine environment, with a balanced approach to community and environmental needs.

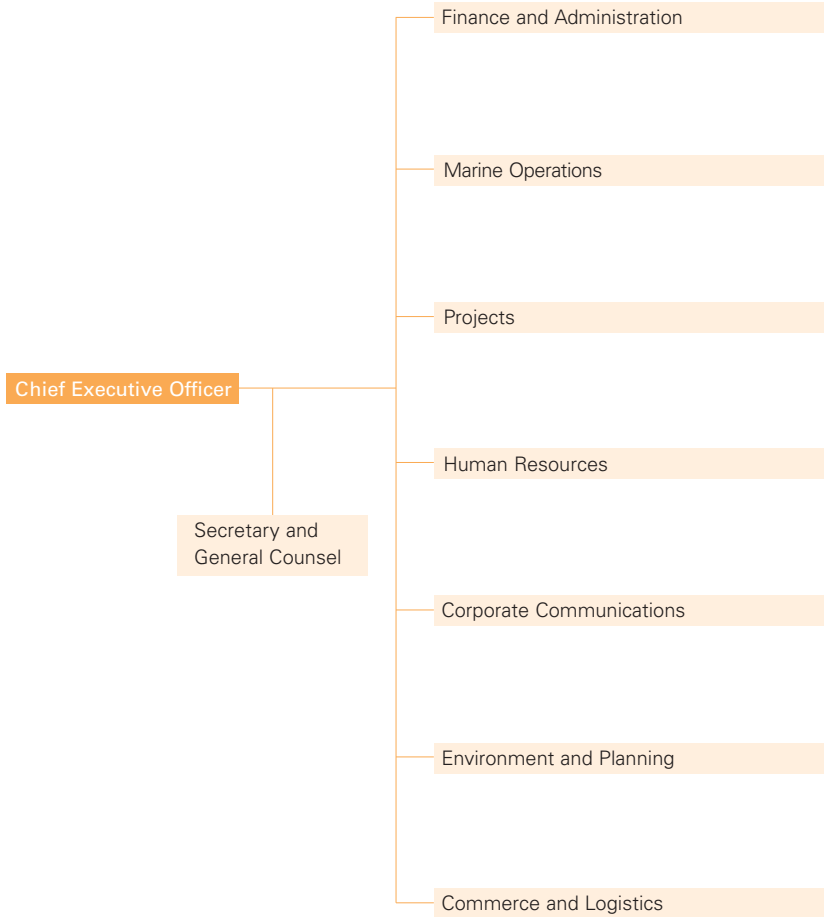
The Corporation holds a Port Safety Operating Licence (PSOL) with responsibilities for channel depths, dangerous goods, emergency response, navigation aids, pilotage and port communications.

For more information on Sydney Ports and its history please refer to www.sydneyports.com.au



Organisation

Sydney Ports Corporation's head office is located in the Maritime Trade Towers, Level 8, 207 Kent Street, in Sydney's central business district. Its Shipping and Marine Operations are located in Sydney Harbour and Port Botany.



For detailed contact information please telephone 61 2 9296 4999 or visit www.sydneyports.com.au

Sydney Ports Corporation

Sydney Pilot Service



Sydney Pilot Service, a wholly owned subsidiary company of Sydney Ports Corporation, provides pilotage services in the ports of Sydney Harbour and Botany Bay.

Pilotage is compulsory for commercial seagoing vessels of 30 metres and over in length unless the Master holds a current Pilotage Exemption Certificate. Bookings are facilitated by an authorised shipping agent through the Sydney Ports Integrated Port System (ShIPS). Sydney Pilot Service holds Quality Assurance (QA) certification to ISO 9001:2000.

For further information on pilotage, please telephone 61 2 9337 6648 or visit www.sydneypilotservice.com.au

Australia's gateway to trade



Sydney Harbour

Sydney Harbour's port facilities handle a wide range of vessels, including dry bulk, general cargo and motor vehicles. Facilities are located in Darling Harbour, Glebe Island, White Bay and private berths at Gore Cove and Blackwattle Bay.

Sydney Harbour is also a leading destination for cruise shipping with passenger vessel facilities located at Wharf 8 Darling Harbour and the Overseas Passenger Terminal at Circular Quay.

Darling Harbour also provides purpose-built berthing facilities for the *Spirit of Tasmania III*, a regular ferry service from Sydney to Devonport, Tasmania.

Port Botany

Port Botany is located 12 kilometres from Sydney's Central Business District and has direct access to road and rail networks.

The port facilities at Port Botany consist of two container terminals and a bulk liquids berth, complemented by container support businesses, bulk liquids berth storage facilities, and private berths at Kurnell.

Trade is steadily increasing through the ports of Sydney driven by consumer and business demand. Sydney Ports is proposing to expand the existing container terminal facilities at Port Botany to cater for this trade and secure the economic growth of NSW.

Trade statistics



For information on trade through the ports of Sydney, please visit www.sydneyports.com.au 'Trade and Logistics,' or contact any of the Commerce and Logistics team on telephone 61 2 9296 4999 or fax 61 2 9296 4776. The 'Commerce and Logistics Review 2003/2004', available from the Sydney Ports website, provides a comprehensive overview of trade through Sydney's ports over the last five years.

Sydney's total trade 12 months ending June 2004

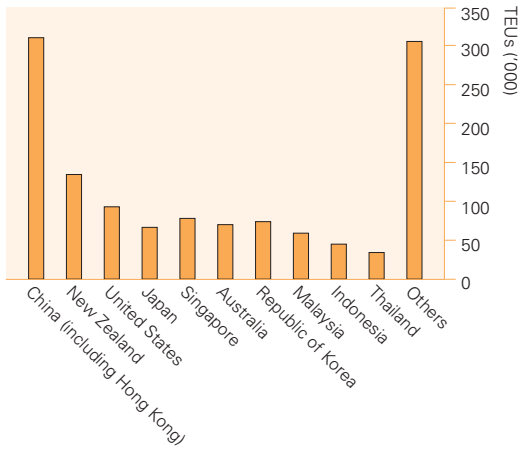
Trade	Volume	Ship calls
Container	1,270,216 TEU	1092
Bulk liquids	12.1 M tonnes	508
Dry bulk	1.6 M tonnes	218
Motor vehicles	220,775 vehicles	324
General	0.3 M tonnes	83
Cruise	140,000 passengers	81
Other	-	102





Total container trade

Sydney Ports container trade by country (TEUs) 12 months ending June 2004



Emergency response



Emergency and incident response capabilities are of paramount importance to Sydney Ports Corporation.

Sydney Ports provides a 24-hour emergency response unit to take action in the event of emergencies on Sydney Harbour or Botany Bay. Sydney Ports' oil-spill response unit has rapid response vessels and trained staff to carry out necessary investigation and clean-up of oil and other spills. Sydney Ports invests approximately \$11 million each year in measures to ensure preparedness, prevention and protection of the environment.

Sydney Ports' Port Safety Operating Licence requires it to undertake investigation and clean-up of oil and other spills in Sydney Harbour, Botany Bay, and the Pacific Ocean within three nautical miles of the coastal zone.

**Emergency telephone (24-hours)
61 2 9296 4000**



Sydney Ports is committed to leading the way in managing our environmental risks, to create sustainable and efficient ports which can operate well into the foreseeable future. We believe that partnering with those who operate at our port facilities is critical to achieving this important business outcome.

Depending on the nature of the activity undertaken by those operating from a port facility, there can be significant environmental legislative requirements and approvals with which operators and Sydney Ports must comply. Sydney Ports also has responsibility for enforcing certain regulations relating to marine pollution and dangerous goods management at ports, to protect the public and the environment from the possible impacts of port activities. Although it is the responsibility of port operators to be informed of their own particular legislative and approval requirements, Sydney Ports has developed information guides to assist port operators understand what is required of their business.

Please refer to the Sydney Ports Port Procedure Guide at www.sydneyports.com.au 'Media and Publications'.

Passenger vessel facilities



Sydney is the only port in Australia with two passenger terminals, The Overseas Passenger Terminal, Circular Quay and Wharf 8 Darling Harbour Passenger Terminal, both located in the heart of the city and close to major tourist attractions.

In 2003/2004 Sydney Ports received over 80 cruise vessel calls. In addition to visits from international vessels, Sydney is home base to the *Pacific Princess* and the *Pacific Sky* (the *Pacific Sun* from November 2004) operated by P&O Cruises.

Darling Harbour also provides purpose-built berthing facilities for the *Spirit of Tasmania III*.

Please refer to www.sydneyports.com.au 'Cruising' for more information and the current schedule of cruise vessel visits.



The Port Procedures Guide, the complete guide to using the ports of Sydney, is available from the Sydney Ports website, www.sydneyports.com.au 'Media and Publications'. The Guide details all vessel movement, restriction, communication, towage, pilotage, emergency, navigation, berth, channel, depth and information relevant to using the ports of Sydney. As Sydney Ports regularly updates the Port Procedures Guide please always refer to the Sydney Ports website for the latest version or contact Harbour Control on 61 2 9296 4000.

The Schedule of Port Charges for the commercial use of Sydney's ports is available from the Sydney Ports website, www.sydneyports.com.au 'Port Operations'.

For further information on port charges please contact Commerce and Logistics on telephone 61 2 9296 4999.

Wave, wind and tide

Sydney Ports Corporation operates the Realtime Oceanographic Data Information System (RODIS) network to provide real time meteorological and oceanographic information to commercial port users.

The general public is able to access this site, which may assist with the planning of recreational water activities, including fishing and boating.

RODIS has been developed to support safe and efficient navigation and maritime operations. For more information on RODIS please refer to www.sydneyports.com.au 'Wave, Wind and Tide'.



Sydney Ports has always taken port security and safety seriously.

Sydney Ports has in place security plans for the port areas of Sydney Harbour and Botany Bay, effective since 1 July 2004.

In addition to Sydney Ports' security plans, foreign and Australian trading vessels, port facility operators and port service providers including pilotage, towage, lines and bunkering services also have their own security plans.

NSW legislation, which has been in place for many years, restricts any person from entering any area of navigable water within 100 metres of particular shipping facilities or wharves at all times, even when there isn't a vessel in berth.

This legislation applies to the following facilities:

- 100 metres from the Shell Gore Cove Terminal in Sydney Harbour;
- 100 metres from the Port Botany Bulk Liquids Berth; and
- 100 metres from the Caltex Kurnell wharf and moorings in Port Botany.

The penalty for unauthorized entry is a maximum \$1,500.

Port security zones established under new Federal legislation, the Maritime Transport Security Act 2003, apply to the following port facilities, whenever there is a vessel at berth:

- 30 metres clearance from any cruise vessel, berthed at the Overseas Passenger Terminal, Circular Quay;
- 30 metres clearance from any cruise vessel or the *Spirit of Tasmania III* passenger ferry berthed at Berth No's 3, 5, 7 or 8 Darling Harbour, or other berths identified by the Port Operator from time to time; and
- 100 metres clearance from the wharf at the Shell Gore Cove Terminal.

The penalty for unauthorized entry into any zone is currently a minimum \$5,500.

Authorised vessels allowed into the zones are:

- a vessel operated by the State Transit Authority following a timetable or in the course of normal operations;
- a vessel that is compelled to do so for the purposes of navigation safety;
- a vessel operated by Sydney Ports Corporation or the NSW Maritime Authority in the course of normal operations; and
- a port service provider subject to an approved security plan.

These zones are in place at the current maritime security level 1 and may change if there is an escalation in threat level.

Other port security measures also include intelligence sharing, new and upgraded fencing and gates, improved access control and identification systems, signage, increased electronic surveillance, perimeter patrols and increased monitoring of the port precinct, particularly the water-side.

These measures will increase the safety and security of the ports and will be progressively rolled out from 1 July 2004 to supplement the measures currently in place.

For more information on port security please refer to www.sydneyports.com.au 'Port Operations'.



Sydney Harbour

Navigation and operating information

Location	Latitude 33° 51.4' S Longitude 151° 14.1' E.
References	NP 14 Australia Pilot Volume 2 NP 15 Australia Pilot Volume 3 NP 83 Admiralty List of Lights and Fog Signals Volume K AHP 11 Australian National Tide Tables.
Charts	AUS 197, AUS 200, AUS 201, AUS 202, AUS 203.
Pilotage	Pilotage is available 24-hours a day and is compulsory for all commercial seagoing vessels of 30 metres and over in length except where the Master holds a current Pilotage Exemption Certificate.
Communications	VHF Radio Call Sign 'Harbour Control' VHF Channel 16, 12 for calling VHF Channel 13 for port control incorporating approval to enter or depart and navigational warnings.
Tidal data	Mean High Water Springs – 1.6 metres Mean High Water Neaps – 1.3 metres.
Approach channels	Sydney Harbour has two separate channels: The Western Channel, which is 210 metres wide and the Eastern Channel, which is 180 metres wide.
Depths in approach channels at ISLW	Harbour Entrance – 24.4 metres Eastern Channel – 10.5 metres Western Channel – 13.7 metres The bottom is sand and silt.
Services	Provision and ship repair services, including the capacity to survey and service safety equipment are available for all vessels.
Bunkering facilities	Available at all berths.
Towage	A privately owned tug operator, employing a fleet of modern tugs.
Harbour response	The Port's sophisticated fire-fighting support vessel is comparable with the best available anywhere in the world and capable of handling Port emergencies.
Vessel control	The overall direction and control of vessels within the port boundaries are governed by the general powers of the Harbour Master.

Darling Harbour Passenger Terminal

Contact	<p>Wharf 8 Darling Harbour Hickson Road Millers Point NSW 2000, Australia</p> <p>Sydney Ports Corporation – Shipping Section Telephone 61 2 9296 4800 Facsimile 61 2 9296 4812</p>
Summary	<p>Darling Harbour Passenger Terminal is operated by Sydney Ports Corporation as the Port's second purpose-built cruise terminal, and has been designed to complement the Overseas Passenger Terminal.</p>
Facilities	<p>The air-conditioned terminal incorporates landscaping, a covered set-down/pick-up point, an extensive Passenger Lounge and Customs Hall, and optimum access for provisions. There is separate access for private vehicles, taxis and coaches, public parking for 127 cars, 16 VIP spaces with a further 28 spaces in the cargo area, and 10 truck spaces.</p>
Area	<p>Passenger Lounge – 900m² Customs Hall – 1,500m².</p>
Berthing facilities	<p>Length – 335 metres Max vessel – LOA 300 metres Depth – 9.8 metres Stringer height – 3.1 metres Two rail-mounted telescopic gangways Landing stage length – 335 metres.</p>
Access	<p>Strategically located in the heart of Sydney's CBD and adjacent to the Darling Harbour tourist precinct, the Terminal can be conveniently reached by road, rail and water craft and is 30 minutes from Kingsford Smith International Airport.</p> <p>Wharf 8 Darling Harbour is available for event hire. Contact Wharf 8 and OPT Venue Management on telephone 61 2 9299 5868 or email wharf8@ozemail.com.au</p>

Overseas Passenger Terminal

Street address	5 Hickson Road The Rocks NSW 2000, Australia
Contact	Sydney Ports Corporation – Shipping Section Telephone 61 2 9296 4800 Facsimile 61 2 9296 4812
Summary	This facility is operated by Sydney Ports Corporation on a common user basis and comprises a two-level Passenger Terminal, modernized and air-conditioned in 2001.
Facilities	The Terminal incorporates a large Arrivals and Customs Hall, as well as extensive loading and storage facilities adjacent to the berth apron.
Area	Total available space – 2,200m ² Passenger Lounge – 465m ² Customs Hall – 1,462m ² .
Berthing facilities	Length – 300 metres Depth – 10.0 metres Stringer height – 3.1 metres Two rail-mounted telescopic gangways Landing stage length – 220 metres Bottom is broken rock ballast.
Access	Strategically located in the heart of Sydney, and a dynamic restaurant precinct, the Terminal is adjacent to the Sydney Harbour Bridge, the Rocks tourist precinct and opposite the world-famous Sydney Opera House. The Terminal can be conveniently reached by road, rail and water craft and is 30 minutes from Kingsford Smith International Airport. The Overseas Passenger Terminal is available for event hire. Contact Wharf 8 and OPT Venue Management on telephone 61 2 9299 5868 or email wharf8@ozemail.com.au

Darling Harbour

The commercial port facilities at Darling Harbour Berths 3 to 7 provide over 17 hectares of high-standard wharves designed to accommodate a range of container, general and dry bulk cargoes.

The total of four berths offer approximately 950 metres of deep water wharves, with the largest undercover wharf area in NSW totalling over 30,973m² of covered cargo sheds and terminal buildings adjacent to the berths. All cargo berths are equipped with high-level light towers which permit 24-hour operation.

Darling Harbour Berths 3 to 7

Operator	Patrick Stevedores
Contact	Wharf 5 Darling Harbour 35-39 Hickson Road Millers Point NSW 2000, Australia Telephone 61 2 9256 6700 Facsimile 61 2 9247 7552
Summary	<p>This is a container, general, Ro/Ro and dry bulk cargo facility, leased and operated by Patrick Stevedores. It comprises paved storage and hardstand areas, enclosed storage sheds, offices and amenities. P&O Ports Ltd are operating from DH 3-7, having transferred their operations from White Bay.</p> <p>Patrick Stevedores operates 24-hours a day, seven days a week, 365 days a year with flexibility of shift start times to meet vessel arrivals.</p>
Berthing facilities	Equipment includes three heavy lift Liebherr mobile luffing cranes (91 x 120 tonnes, 1 x 100 tonnes and 1 x 47 tonnes) with a tandem capacity of 160 tonnes and a fleet of forklifts, dock trucks and attachments available to handle all types of cargoes.

Darling Harbour Berth 3

Summary	Dry bulk, Ro/Ro, Lo/Lo general and containerised cargo. 48 reefer points.
Area	Berth covers an area of 3.3 hectares Shed – 130 metres x 45 metres.
Berthing facilities	Berth face length – 229 metres Depth – 11.2 metres.

Sydney Harbour

Darling Harbour

Darling Harbour Berth 4

Summary	Ro/Ro, Lo/Lo general and containerised cargo. 68 reefer points.
Area	Berth covers an area of 4.9 hectares Shed – 171 metres x 45 metres.
Berthing facilities	Berth face length – 287 metres Depth – 11.0 metres.

Darling Harbour Berth 5

Summary	Specially designed for Ro/Ro quarter ramp vessels. Also able to accommodate dry bulk and Lo/Lo containerised and general cargo vessels. 40 reefer points.
Area	Berth covers an area of 6.6 hectares Shed – 169 metres x 67 metres.
Berthing facilities	Berth face length – 336 metres Depth – 10.5 metres.

Darling Harbour Berth 7

Summary	Small vessel berth capable of handling general and containerised cargo. 40 reefer points.
Area	Berth covers an area of 1.4 hectares.
Berthing facilities	Berth face length – 113 metres Depth – 9.9 metres Under cover hail net storage for motor vehicles.

TT Line

Contact	Wharf 5 to 7 Darling Harbour NSW 2000, Australia Telephone 13 20 10 www.spiritoftasmania.com.au
Summary	The <i>Spirit of Tasmania III</i> is operated between Sydney and Devonport two to three times a week, carrying passengers, vehicles and freight.
Access	Passengers gain access through Gate DH8N. Freight access through DH5.

Glebe Island

Glebe Island Berths 1 and 2 are dedicated motor vehicle facilities, while Berths 7 and 8 at Glebe Island have been developed as the main area for dry bulk cargo discharge operations in Sydney Ports.

Glebe Island Berths 1 and 2

Operator	Australian Amalgamated Terminals Pty Ltd (AAT)
Contact	Sommerville Road Rozelle NSW 2039, Australia Telephone 61 2 8755 1200 Facsimile 61 2 8755 1204
Summary	Glebe Island Berths 1 and 2 comprise a dedicated motor vehicle facility with on-wharf Pre-Delivery Inspection capability and capacity to accommodate 5,000 vehicles. AAT operates 24-hours a day, seven days a week. AAT is a joint venture between Patrick Corporation and P&O Ports and provides common user stevedoring access.
Facilities	Fully paved wharf and vehicle storage area. The area is totally fenced and under 24-hour surveillance.
Area	12 hectares.
Berthing facilities	Length – 468 metres Depth – 11.9 metres Stringer height – 2.9 metres.
Access	Good road access to metropolitan Sydney and regional NSW.

Glebe Island Berths 7 and 8

Operator	Common-user Berths
Contact	Sommerville Road Glebe Island NSW 2034, Australia Sydney Ports Corporation – Shipping Section Telephone 61 2 9296 4800 Facsimile 61 2 9296 4812
Summary	Glebe Island berths 7 and 8 are common user bulk dry cargo discharge facilities, equipped for self-discharging vessels using wharf manifold to pipelines, conveyors and adjacent storage silos. The types of cargo discharged at this facility include bulk refined sugar and gypsum.
Berthing facilities	No. 7 Length – 229 metres Depth – 11.1 metres Stringer height – 4.1 metres. No. 8 Length – 120 metres Depth – 9.3 metres Stringer height – 4.1 metres. Sydney Ports holds an environmental protection licence for the discharge of a limited range and quantity of bulk cargoes at this berth, which is available for use by port customers. Any intended discharges which are subject to this licence must first be approved by Sydney Ports (refer to the Port Procedures Guide www.sydneyports.com.au 'Media and Publications').
Operator	Gypsum Resources Australia (GRA)
Contact	Sommerville Road Glebe Island NSW 2034, Australia Telephone 61 2 9638 0571 Facsimile 61 2 9684 2525
Summary	Gypsum Resources Australia (GRA) operates a gypsum storage facility at Glebe Island 7.
Storage	GRA has storage capacity of 30,000 tonnes.
Operator	Sugar Australia Pty Ltd
Contact	Lot 1, Sommerville Road Glebe Island NSW 2034, Australia Telephone 61 2 9555 9422 Facsimile 61 2 9555 9655
Summary	Sugar Australia is a joint venture between CSR Ltd and Mackay Sugar Co-operative Association Limited.
Facilities	Sugar Australia has storage capacity for 28,000 tonnes of refined sugar.

Glebe Island Berth 8

Operator	Cement Australia Limited
Contact	Sommerville Road Glebe Island NSW 2034, Australia Head office Level 19, 111 Pacific Highway North Sydney NSW 2060, Australia Telephone 61 2 9956 8811 Facsimile 61 2 9956 7311
Summary	Cement Australia Limited operates a bulk cement terminal at Glebe Island. Cement is transported from Devonport, Tasmania by self-discharging ship.
Facilities	Cement Australia has storage capacity of 40,000 tonnes for bulk cement.
Summary	Berth 8 Glebe Island is a dry bulk cargo discharge facility.
Operator	Penrice Soda Products Pty Ltd
Contact	Berth 8 Glebe Island NSW 2034, Australia Telephone 61 2 9555 7500 Facsimile 61 2 9818 2526
Summary	Penrice Soda Products is Australia's only soda ash manufacturer. Bulk soda ash is shipped from Penrice's factory in Osborne, South Australia.
Storage	The Glebe Island terminal has storage capacity of 7,500 tonnes.

White Bay Berths 2 to 6

Operator	Sydney Ports Corporation
Contact	Via Sommersville Road Rozelle NSW 2039, Australia Sydney Ports Corporation – Shipping Section Telephone 61 2 9296 4800 Facsimile 61 2 9296 4812
Berthing facilities	<p>No. 2 Length – 168 metres Depth – 9.8 metres Stringer height – 3.1 metres</p> <p>No. 3 Length – 270 metres Depth – 10.5 metres Approved for ‘non-gas free’ tankers</p> <p>No. 4 Length – 274 metres Depth – 10.9 metres</p> <p>No. 5 Length – 229 metres Depth – 11.0 metres</p> <p>No. 6 Length – 178 metres Depth – 11.0 metres Stringer height – 3.0 metres Approved for ‘non-gas-free’ tankers.</p>
Summary	Total of 1,119 metres of berth available for bookings in the short-term for use as general cargo and lay-up berth.
Storage	11,280m ² shed at White Bay Berth No.5.
Access	Serviced by road and rail. Rail sidings include 3 x 265 metres tracks linked to the NSW and interstate rail systems. Sydney Ports intends to hold an environmental protection licence for the discharge of a limited range and quantity of bulk cargoes at this berth, which will be available for use by port customers. Any intended discharges which will be subject to this licence and must first be approved by Sydney Ports (refer to the Port Procedures Guide www.sydneyports.com.au ‘Media and Publications’).

Private facilities

Gore Bay Terminal

Operator	Shell Company of Australia Ltd
Contact	Manns Avenue Greenwich NSW 2065, Australia Telephone 61 2 8437 1238 (24-hours) Facsimile 61 2 8437 1203
Summary	Operating since the early 1900's, Shell's Gore Cove Terminal is used for the import, export and storage of oil products. Approximately 4.5 million tonnes of crude oils, feedstocks and products are moved through the Terminal each year. Crude oil, feedstocks and products are transferred to the Shell Clyde Refinery by underground pipeline. Vessels are able to discharge at up to 4,000 tonnes an hour. The Terminal is staffed 24-hours a day, seven days a week.
Area	25 hectares.
Berthing facilities	Wharf 1 'T' head jetty Length – 320 metres Depth – 13.7 metres Can accommodate vessels up to 265 metres LOA Crude oil – 500mm lines; 300mm lines; 300mm loading arms Wharf 2 Length – 190 metres, depth – 9.7 metres Can accommodate vessels up to 190 metres LOA Crude oil – 500mm lines; 300mm lines; 300mm loading arms.
Storage	20 bulk storage tanks with a total capacity to hold 165,000 tonnes of hydrocarbons. The tanks are of both fixed and floating roof construction.

Blackwattle Bay

Operator Hanson Australia Pty Ltd

Contact Pyrmont Bridge Road
Glebe NSW 2037, Australia
Telephone 61 2 9323 4000
Facsimile 61 2 9323 4500

Summary Hanson's Blackwattle Bay berth is used for the discharge of bulk concrete aggregate.

Berthing facilities Length – 120 metres
Depth – 5.5 metres.



Port Botany

Navigation and operating information

Location	Latitude 33° 58.5' S Longitude 151° 12.6' E.
Summary	Botany Bay lies 12 nautical miles south from the entrance to Sydney Harbour. Port Botany, on the northern side of the bay, has been developed as a major port complex. On the southern side of the bay are berths to serve the oil industry at Kurnell.
References	NP 14 Australia Pilot Volume 2 NP 38 Admiralty List of Lights and Fog Signals Volume K AHP 11 Australian National Tide Tables.
Charts	AUS 197, AUS 198, AUS 199.
Pilotage	Pilotage is available 24-hours a day and is compulsory for all seagoing commercial vessels of 30 metres and over in length except where the Master holds a current Pilotage Exemption Certificate.
Communications	VHF Radio Call Sign 'Sydney Harbour Control'. VHF Channel 16, 12 for calling. VHF Channel 13 for port control incorporating approval to enter or depart and navigational warnings.
Tidal data	Mean High Water Springs – 1.6 metres Mean High Water Neaps – 1.3 metres.
Depths in approach	Channels at ISLW The channel to the swinging basin and berths at Kurnell has a minimum depth of 11.2 metres. The channel to the Port Botany area is 213 metres wide and has a minimum depth of 15.0 metres. The swinging basin at Brotherson Dock is dredged to 14.4 metres. The bottom is sand.
Services	Providore and ship repair services, including the capacity to survey and service safety equipment are available for all vessels.
Bunkering facilities	Available by barge/road tanker/pipeline at all berths.
Fresh water	Available at all berths.
Towage	Two private tug operators, employing a fleet of modern tugs.
Harbour response	The Port's sophisticated fire-fighting support vessel is comparable with the best available anywhere in the world and capable of handling Port emergencies.
Vessel control	The overall direction and control of vessels within the port boundaries are governed by the general powers of the Harbour Master.

Container terminals

P&O Port Botany Container Terminal

Contact	Gate B34, 42 Friendship Road Matraville NSW 2036, Australia Telephone 61 2 9394 0900 Facsimile 61 2 9394 0955
Summary	Located on the southern side of Brotherson Dock (Berth No's 4, 5, 5A and 6). P&O Ports Ltd is the trading name of Container Terminals Australia Limited (CTAL) which is owned by P&O Ports Ltd, and Nippon Yusen Kaisha Ltd (NYK). P&O Ports operates 24-hours a day, seven days a week.
Area	Total terminal area – 38.6 hectares.
Berthing facilities	Total wharf length – 936 metres Depth range – 14.0 metres to 14.8 metres Stringer height – 3.6 metres.
Storage	Includes reefer container facilities for 376 units.
Equipment	Includes three twin-lift and three high-speed, single lift quay cranes, each with a spreader capacity of 40 tonnes and heavy lift capacity of up to 84 tonnes. P&O Ports also has a modern fleet of forklift trucks, yard tractors, internal transfer vehicles, and 20-rubber tyred gantries (RTGs). P&O Ports is fully computerised, using a Vehicle Booking System (VBS) and the Navis Ship/Yard Planning System. During 2005 an additional post panamax quay crane will be commissioned.
Transport/access	Road access via Friendship Road. On-site transport facilities include 80 truck parking slots and 3 x 340 metre rail sidings linked to the NSW and interstate rail systems.

Patrick Terminal

Contact	Gate B110, Penrhyn Road Port Botany NSW 2036, Australia Telephone 61 2 9394 0000 Facsimile 61 2 9394 0395
Summary	Located on the northern side of Brotherson Dock (Berth No.'s 1, 1A, 2, 2A and 3) and owned by Patrick Corporation. The Patrick terminal operates 24-hours a day, seven days a week.
Area	Total terminal area – 46.1 hectares.
Berthing facilities	Total wharf length – 1,006 metres Depth range – 14.2 to 14.9 metres Stringer height – 3.6 metres.
Storage	Reefer container storage includes 700 reefer outlets.
Equipment	Currently includes six single-lift quay cranes, of which four also have a heavy lift capacity of 80 tonnes. Terminal container handling equipment includes a fleet of 28 straddle carriers, two reach stackers and a number of heavy and light forklifts. During 2005, five new semi-automatic Rail Mounted Gantries will be commissioned to substantially improve the road to rail receipt and despatch performance of the Terminal. During 2006, two new post panamax quay cranes will be commissioned.
Transport/access	Road access via Penryhn Road. On-site rail facilities includes 2 x 600 metre sidings linked to the NSW and interstate rail systems.

Bulk Liquids Berth and storage facilities

The Bulk Liquids Berth at Port Botany services the discharge and load requirements of the petrochemical industry in New South Wales.

This facility is the busiest of Sydney's 'common-user' berths. Hazardous and non-hazardous bulk liquids, petrochemicals and gases are transferred by pipeline to nearby industry storage facilities which are operated by private companies.

Contact	Gate B42, Charlotte Road Port Botany NSW 2036, Australia Sydney Ports Corporation – Shipping Section Telephone 61 2 9296 4800 Facsimile 61 2 9296 4812 Direct contact – Port Duty Officer (24-hours) Telephone 61 2 9666 4906 Facsimile 61 2 9666 4513
Summary	The Bulk Liquids Berth comprises a piled approach roadway and pipe support structure with 'T' head mooring and berthing dolphins. Depth alongside – 18.3 metres Maximum draught permitted – 14 metres Stringer height – 3.4 metres Can accommodate vessels up to 75,000 tonnes DWT (90,000 DWT on application) and LOA 243 metres (243 metres by consultation).
Access	The facility is accessed via Gate B42, Charlotte Road, Port Botany.

Bulk Liquids Berth users

VOPAK

Contact	49 Friendship Road Port Botany NSW 2036, Australia Telephone 61 2 9666 4455 Facsimile 61 2 9694 1182
Summary	Part of the Dutch Group which provides high-quality logistical services in tank storage, shipping and transport. VOPAK provides storage and handling facilities for liquid chemicals and petroleum products at its two sites at Port Botany, and is able to offer a complete terminal service through its interstate and overseas facilities. DG container storage will be added during 2005. Both sites are: – AS/NZS ISO:9001 and AS/NZS ISO:14001 certified; and – Licensed bond warehouses.

Site A facilities (chemical terminal)

Contact	Gate B33, 49 Friendship Road Port Botany NSW 2036, Australia
Area	4.5 hectares.
Berthing facilities	Multiple stainless and mild steel product and vapour dock lines.
Product range	Full range of petrochemicals and solvents, lube oils and additives, vegetable oils and tallow.
Capacity	36,000m ³ with 70 tanks ranging from 30 to 2,000m ³ .
Storage	Stainless and mild steel, including various linings.
Services	Heating, blending, nitrogen blanketing; vapour emission control; road tanker, iso-container, IBC filling, drumming, weighbridge.

Site B facilities (petroleum terminal)

Contact	Gate B47, 20 Friendship Road Port Botany NSW 2036, Australia
Area	8.9 hectares.
Berthing facilities	2 x 300mm mild steel dock lines 1 x 250mm marine loading arm.
Product range	Gasoline, distillate.
Capacity	100,000m ³ (Stage 1) with 12 tanks ranging from 1,950m ³ to 17,500m ³ .
Storage	Mild steel with aluminium internal floater and dome.
Services	Blending; vapour recovery control; fully automated truck loading.
Expansion	Further tankage is planned in Stage 2 which will increase capacity to 160,000m ³ .

Origin Energy

Contact	Gate B35, 47 Friendship Road Port Botany NSW 2036, Australia Telephone 61 2 9316 3869 Facsimile 61 2 9316 4614
Summary	The Origin Energy Terminal has a (pressure) storage capacity of 4,500 tonnes LPG in 18 sand moulded tanks. The Terminal is the major supplier of high-purity aerosol-grade LPG propellant to the Sydney market and maintains dedicated unodourised equipment and trucks for this market. LPG is received into the Origin Terminal by ship discharge at Port Botany Bulk Liquids Berth and pipeline transfer from the Orica Hydrocarbons Terminal. On-site equipment enables the removal of some trace impurities from the LPG.
Area	Total terminal area – 3.78 hectares.
Berthing facilities	Operates a 6-inch marine loading arm at the Port Botany Bulk Liquids Berth.
Storage	Includes 18 sand mounded LPG storage tanks of 540m ³ each, giving total storage of approximately 4,500 tonnes LPG.
Equipment	Fleet of 11 LPG delivery trucks ranging from 2 – 22 tonnes capacity. Loading bays for three LPG trucks, including B doubles.
Transport/access	Road access for outgoing product.

Orica Australia Pty Ltd

Contact	Gate B40, 39 Friendship Road Port Botany NSW 2036, Australia Telephone 61 2 9316 9974
Summary	Orica operates an import terminal for propane and butane. Facilities exist for the import of ethylene and LPG as well as ethylene exports. Purging facilities are also available.
Area	7.25 hectares.
Berthing facilities	Operates a 6 inch marine loading arm at the Port Botany Bulk Liquids Berth.
Storage	1x 800m ³ refrigerated ethylene storage tank 1x 14,000m ³ refrigerated propane storage tank 1x 14,000m ³ refrigerated butane storage tank.
Access	Pipeline distribution system to Botany Industrial Park.

Terminals Pty Ltd

Contact	Gate B38, 45 Friendship Road Port Botany NSW 2036, Australia Telephone 61 2 9316 9743 Facsimile 61 2 9316 9742
Summary	Terminals Pty Ltd provides bulk liquid storage, handling and repackaging services, import and export shipping of hazardous and non-hazardous liquid chemicals.
Storage	65 tanks. Capacity 53,000m ³ . Tanks range in size from 200m ³ to 8,000m ³ . Licensed bonded warehouse.
Services	Road tanker, ISO tank loading/unloading, IBC and drum filling, weighbridge, good road access.
Warehouse	Drum storage for 3,000 drums. Multiple stainless and mild steel dock lines.

Elgas Ltd

Contact	Gate B44, 30 Friendship Road Port Botany NSW 2036, Australia Telephone 61 2 8336 4300 www.elgas.com.au
Summary	The Sydney LPG Cavern utilises state-of-the-art underground technology to store up to 65,000 tonnes of high purity propane (LPG) in a purpose-built unlined rock cavern. Product is received into the terminal from refrigerated LPG ships with the product being heated on site prior to entry into the underground storage facility. The facility has the capability to receive product at up to 750 tonnes per hour. The terminal also has the capability to load vessels with pressurised storage tanks.
Area	Total terminal area – 7.1 hectares.
Berthing facilities	Operates a 300mm marine loading arm at the Port Botany Bulk Liquids Berth.
Storage	The storage cavern consists of 4 x 230 metre long galleries each 11 metres high x 14 metres wide located 135 metres below ground.
Loading equipment	There are three road tanker loading bays with two catering for B doubles. The loading of road tankers is fully automated and operates 24-hours a day, seven days a week.

Container parks

MT Movements Pty Ltd

Contact	Gate B48, 1-9 Friendship Road Port Botany NSW 2036, Australia Telephone 61 2 9316 8888 mtmovements@tyne.com.au
Summary	Empty container depot. Main business is to reposition boxes.
Area	2.5 hectares.
Storage capacity	2,000 TEUs.
Services	Container handling and storage, transport.

P&O Port Botany Container Park/Rail Facility

Contact	Gate B2, 1890 Botany Road Port Botany NSW 2036, Australia Telephone 61 2 9578 8666 www.poports.com.au
Summary	P&O provides a full range of transport services both for empty containers, FCL and LCL shipments including full and empty container storage, tailgate inspections and fumigation services. A complete container inspection service is offered for all container types, supported by qualified experienced repair and survey staff. A modern cleaning plant supported by environmentally friendly pollution controls offers full cleaning services to the ISO Tank and Road Tanker industry. 2 x 700 metre rail sidings link the Terminal to the NSW rail system.
Area	8 hectares.
Storage capacity	8,500 TEUs.

Patrick Logistics Botany Park

Contact	Gate B29, 60 Friendship Road Port Botany NSW 2036, Australia Telephone 61 2 9316 6611 Facsimile 61 2 9700 1543
Summary	Patrick Logistics Botany Park specialises in the storage, handling and repair of empty containers. A separate 77G Customs Bond area can store up to 1,400 TEUs. The facility also provides quarantine tailgate inspections, fumigation for FCL containers and freight station services.
Area	6.5 hectares.
Storage capacity	5,200 TEUs.

VOPAK Dangerous Goods Container Park (facility to commence operations in 2005)

Contact	Gate B33, 49 Friendship Road Port Botany NSW 2036, Australia Telephone 61 2 9666 4455
Summary	Dangerous goods container storage, and isotank container storage. Heating and refrigeration of dangerous goods isotanks. Fully bonded licensed facility. Minor repairs to isotanks.
Area	8,000m ² .
Storage capacity	320 dangerous goods containers/isotanks 14 isotank 24-hour heating bays 4 refrigeration points.

P&O Molineux Point Warehouse Facility

Contact	Gate B53, 13 Friendship Road Port Botany NSW 2036, Australia Telephone 61 2 9316 3300 www.poports.com.au
Summary	P&O provides LCL/FCL storage, 77G Customs Bond storage, LCL/FCL/FAK unpacking, export packing, transport and container fumigation. Storage and handling facilities exist for refrigerated cargo. There is also a permanent AQIS officer on site and 24-hour, round-the-clock security.
Area	10 hectares.
Warehouse and offices	33,000m ² .
Storage capacity	850 TEUs.
Reefer outlets	64.

Packing/unpacking warehousing facilities

P&O Port Botany Freight Station (formerly Smith Bros)

Contact	Gate B5, 4 Bumborah Point Road Port Botany NSW 2036, Australia Telephone 61 2 9316 3300 www.poports.com.au
Summary	P&O provides LCL/FCL storage, 77G Customs Bond storage, LCL/FCL/FAK unpacking, export packing, transport, container steam cleaning and fumigation. Storage and handling facilities exist for refrigerated cargo and unitised timber. There is also a permanent AQIS officer on site and 24-hour, round-the-clock security.
Area	7.1 hectares.
Warehouse	13,000m ² .
Storage capacity	5,000 TEUs.

Patrick Logistics 'Botany Depot'

Contact	Gate B30, 55 Friendship Road Port Botany NSW 2036, Australia Telephone 61 2 9316 6611 Facsimile 61 2 9700 1543
Summary	LCL/FCL/FAK pack/unpack Customs Depot licenced under section 77G AQIS Accredited Category 1.1 Quarantine wash bay Overdimensional cargoes FCL storage R&D 6/24-hours Sunday on application Refrigerated container power storage 24-hour security, CCTGV on/off site monitoring.

Patrick Logistics 'Bumborah Depot' (facility to commence operations in 2005)

Contact	Gate B3, 2 Bumborah Point Road Port Botany NSW 2036, Australia Telephone 61 411 0369 69 www.patrick.com.au
Summary	LCL – Unpack/pack warehousing facility.
Area	1.5 hectares of warehouse storage capacity. 5 hectare site.

Warehouse Solutions International Pty Ltd

Contact Gate B9, 11 Bumborah Point Road
Port Botany NSW 2036, Australia

Telephone 61 2 8304 0208
www.acaint.com.au

Summary Warehouse Solutions International Pty Ltd (WSI) provides contract warehousing and distribution services to importing and exporting companies. WSI has a computerised Warehouse Management System (WMS) specifically designed and developed for third party contract warehousing. The WMS has a fully integrated Scan Pack system, which utilises electronic order receipt and processing. It is accredited with all major retailers' barcode despatch requirements. WSI also provides customs 77G FAK container deconsolidation and consolidation services, LCL/FCL bonded storage, steam cleaning, fumigation, container and machinery washing. There is also storage for refrigerated containers, international freight forwarding and customs clearance, customs tariff and warehousing consultancy services. An AQIS Officer is stationed at the site.

Area 3.5 hectares.

Storage capacity Bonded – 4,000m²
Free storage – 11,000m²
Containers – 1,000.

Other facilities

Australian Customs Service Container Examination Facility

Contact	Gate B15, 13 Bumborah Point Road Matraville NSW 2036, Australia Manager Telephone 61 2 8335 9001 Office Telephone 61 2 8335 9010 Facsimile 61 2 8335 9009
Summary	The Australian Customs Service uses the site for the examination of sea cargo. Examination methods will include the x-ray scanning of sea containers and where necessary, a physical examination including the unpacking and repacking of the container. The Australian Customs Service aims to examine approximately five per cent of import containers.
Area	The container examination facility is set on 2.7 hectares of land that was previously occupied by the Bunnerong Power Station.

Randwick City Council Recycling Facility (Due to open in 2005)

Contact	Gate B8, 9 Bumborah Point Road Matraville NSW 2036, Australia Telephone 61 1300 722 542
Summary	Green Waste shredding and processing for mulch and compost. Crushing, grinding and sorting of demolition material for recycling. The purpose of the site is to recycle green waste, construction and demolition materials and turn those materials into reusable products. The facility has the capacity to receive and process over 80,000 tonnes of material at any one time. The recycled products are used for Council's own operation and available for sale to customers. The site operates with various pieces of equipment including front-end loaders, excavators, crushing and screening equipment.
Area	The overall area of the facility is approximately 3.2 hectares.
Access	Access to the site is from the entrance on Bumborah Point Road and the facility is open from 7.00am to 5.30pm Monday to Saturday.

Private facilities

On the southern side of Port Botany, Caltex Australia operates a jetty with two berths and a multi-buoy mooring, primarily for crude oil imports as well as other petrochemical products.

Kurnell (south side of Port Botany)

- Kurnell No. 1** Minimum depth alongside – 10.3 metres
Total wharf length – 200 metres
Can accommodate vessels up to 185 metres in length.
- Kurnell No. 2** Maximum vessel draft allowable – 10.6 metres
Total wharf length – 200 metres
Can accommodate vessels up to 200 metres in length.
- Kurnell No. 3** This comprises a multi-buoy mooring with a submarine pipeline to the Caltex shore facility. Maximum vessel draught allowable – 11.6 metres. Maximum allowable vessel length – 275 metres.

Caltex Refineries (NSW) Pty Ltd

Contact 2 Solander Street
Kurnell NSW 2231, Australia

Marine Operations Area Manager (business hours)
Telephone 61 2 9668 1423
Facsimile 61 2 9668 1190
www.caltex.com.au

Refinery Shift Supervisor (after hours)
Telephone 61 2 9668 1250

Summary Caltex Refineries (NSW) is located at Kurnell on the southern shore of Port Botany. It has a crude oil refining capacity of 124,500 barrels per day. The Caltex Lubricating Oil Refinery (CLOR) is also located at Kurnell, adjacent to the fuel refinery. CLOR has a capacity of 3,750 barrels per day. It produces a wide range of base oil products for blending into lubricants such as motor oils and greases.



Navigation services directory

Sydney's Integrated Port System (ShIPS)

Sydney Ports operates an internet based computerised system (ShIPS) that coordinates vessel movement schedules, bookings and port service providers.

ShIPS enables:

- agents to book pilots, tugs and linesmen;
- agents to lodge applications for work permits and bunkers;
- agents and freight forwarders to make dangerous goods lodgements;
- port service providers to confirm their ability to provide services;
- Sydney Ports to provide dangerous goods information to emergency services; and
- stevedores, government agencies and associated industries to view vessel schedules quickly in a real time environment.

ShIPS operates 24-hours a day throughout the year.

Use of ShIPS is a compulsory Sydney Ports requirement for all accredited agents and service providers. Consequently all movement booking, work or bunker permit applications and dangerous goods lodgements should be via the system.

Contact Telephone 61 2 9296 4800
Facsimile 61 2 9296 4812

Pilotage

Pilotage is compulsory for all vessels except where the Master holds a Pilotage Exemption Certificate.

Contact **Sydney Pilot Service**
1A Marine Parade
Watsons Bay NSW 2030, Australia

Telephone 61 2 9337 6648
Facsimile 61 2 9337 4048

Summary Sydney Pilot Service is a wholly owned subsidiary company of Sydney Ports Corporation providing pilotage services in the ports of Sydney Harbour and Botany Bay.

Hours Pilots bookings 24-hours a day, seven days a week.

Pilot boarding ground **Sydney Harbour**
Latitude 33° 50.5' S
Longitude 151° 21.36' E

Botany Bay
Latitude 34° 01.1' S
Longitude 151° 18.4' E.

Requirements ETA should be confirmed four hours prior to arrival and reconfirmed two hours before reaching pilot boarding ground. Ship speed should be eight knots. Ladders should be rigged three metres above water and in accordance with SOLAS and ISO standards.

Towage

Contact

Adsteam Harbour Pty Ltd
7 Cooper Street
Balmain NSW 2041, Australia

PO Box 176
Balmain NSW 2041, Australia

24-hour contact

Telephone 61 2 9818 9444
Facsimile 61 2 9818 9440

Vessels

*Warrawee*¹, bollard pull 50 tonnes
Wonga, bollard pull 50 tonnes
Woonah, bollard pull 50 tonnes
Walana, bollard pull 50 tonnes
Williga, bollard pull 50 tonnes
Wooree, bollard pull 41 tonnes
Wolli, bollard pull 28 tonnes.

1. Fire fighting capacity.

Sydney Harbour

Operates 3 tugs and 3 line running/general work boats:

Coramba 'C' Class Tug, bollard pull 8 tonnes

Lismore, bollard pull 6 tonnes

Morpeth 'C' Class Tug, bollard pull 6.5 tonnes.

Botany Bay

Operates 2 line running/general work boats, 2 line running/
passenger carrying vessels and a 5 tonne crane barge.

Bega 'C' Class Tug, bollard pull 6 tonnes.

Lines handling

Adsteam Harbour provides line services for both
Sydney Harbour and Botany Bay.

Australian Maritime Services

Contact PO Box 733
Botany NSW 1455, Australia

24 hour contact Telephone 61 400 338 312
Facsimile 61 2 9666 1988
www.ams2000.com

Vessels *Botany*, bollard pull 54 tonnes
Hunter, bollard pull 56 tonnes.

Ausport Marine

Contact Gate B106, Inter-Terminal Access Road
Port Botany NSW 2036, Australia

24-hour contact Telephone 61 2 9316 7900
Facsimile 61 2 9316 7955
www.ausportmarine.com.au
info@ausportmarine.com.au

Lines handling Ausport Marine provides line and launch services in Botany Bay.

Polaris Marine Pty Ltd

Contact 114 Western Crescent
Gladesville NSW 2111, Australia

24-hour contact Telephone 61 2 9816 5696
Facsimile 61 2 9879 6847
www.polarismarine.com.au

Vessels 2 'C' class tugs to 7 tonnes bollard pull.
4 work boats with diesel fuel/oils, crane equipment, 2 crane lighters. Delivery of stores, water and remove waste.
Sullage bilge water.

Summary Mooring Services and Landing Barge.

Ship repair facilities – ADI Limited

Contact	<p>Marine Operations Level 2, Building 48 Garden Island NSW 2011, Australia</p> <p>Telephone 61 2 9562 3517 Facsimile 61 2 9562 3287</p>
Summary	<p>ADI's Garden Island facility operates the largest graving dock in the Southern Hemisphere. It is capable of docking ships up to 110,000 tonnes deadweight, together with a floating dock of 1,000 tonnes lift capacity.</p> <p>ADI has developed extensive capabilities at this one location and provides all skills and resources required for the repair, conversion and modernisation of navy and commercial vessels.</p>
Fresh water	<p>Available at all berths, with a minimum rate of flow of approximately 20 tonnes per hour. Fresh water can also be supplied by tugs to vessels at buoys or anchorage.</p>





Services directory

Section 1

- 54** Agents and Lines
- 61** Port Service Providers
- 62** Cruise Shipping Lines

Agents and Lines

Agent	Shipping Line	Cargo Handled	Trades Served
Adsteam Agency Pty Ltd Level 12, O'Connell House 15-19 Bent Street Sydney NSW 2000 Telephone 61 2 8227 3000 Facsimile 61 2 9223 0064 info@syda.adsteam.com.au www.agency.adsteam.com.au	Various bulk and tramp shipping lines.	Bulk/Breakbulk cargo	Worldwide.
	Kyowa Shipping Co. Ltd	Containers, Breakbulk	Taiwan, Korea, Japan
ANL Container Line Pty Ltd Suite 134 Jones Bay Wharf 19-21 Pirrama Road Pyrmont NSW 2009 Telephone 61 2 9325 7333 Facsimile 61 2 9325 7395 www.anl.com.au	ANL Container Line	Containers	North & East Asia, South East Asia, New Zealand, Papua New Guinea & Noumea.
	CMA – CGM	Containers	SE Asia, Europe, New Zealand, Middle East, East Coast North America.
	Toyofuji	Motor vehicles	Japan.
ANZDL Management Services Wharf 10 Pirrama Road Pyrmont NSW 2009 Telephone 61 2 9367 3900 Facsimile 61 2 9394 1695 www.cpships.com	Australia New Zealand Direct Line (ANZDL)	Containers Ro/Ro	Canada, United States, Mexico, Fiji, Tahiti, New Zealand.
APL Lines (Australia) Level 1 62 Pitt Street Sydney NSW 2000 Telephone 61 9257 0888 Facsimile 61 2 9241 5992 www.apl.com	APL Lines	Containers	SE Asia (relay to Europe, Middle East, North America); N/E Asia (North & South China & Taiwan).
Asia World Shipping Services Suite 9 1/401 Pacific Highway Artarmon NSW 2064 Telephone 61 2 9906 6372 Facsimile 61 2 9906 1874 jpickering@asiaworld.com.au www.asiaworld.com.au	Spliethoff B.V.	Bulk/Breakbulk	Regular services to Japan, Korea, Taiwan, China, North Asia, Europe, Worldwide destinations on inducement.
	Various Tramp Shipping Lines	Bulk/Breakbulk	
Australian Ships Agencies Pty Ltd 3/88 George Street The Rocks Sydney NSW 2000 Telephone 61 2 9247 5375 Facsimile 61 2 9247 5522 asa-ship@classic.com.au	Various Tramp Shipping Lines	Breakbulk	Middle East, SE Asia.

Sydney Ports Corporation

Agents and Lines

Agent	Shipping Line	Cargo Handled	Trades Served
Barwil Agencies Aust. Pty Ltd Level 4 370 Pitt Street Sydney NSW 2000 Telephone 61 2 8263 3500 Facsimile 61 2 9264 1077 sydney@barwil.com.au www.barwil.com	Shell Refining (Aust) Pty Ltd	Refined petroleum products & crude oil Bulk oils/products	Australia, New Zealand & South Pacific. Worldwide.
	Shell International Trading & Shipping Stolt Neilsen Transportation Group BHP Transport Various Tramp Shipping Lines	Bulk, breakbulk, oils Bulk, breakbulk, oils Heavy lift	Worldwide. Worldwide. Worldwide.
Beaufort Shipping Agency Co 120 Sussex Street Sydney NSW 2000 Telephone 61 2 9364 8960 Facsimile 61 2 9364 8999 operations@beaufortshipping.com	Various Tramp Shipping Lines	Bulk, breakbulk	Worldwide.
China Shipping (Australia) Agency Suite 401, Level 4 725 George Street Sydney NSW 2000 Telephone 61 2 9211 8133 Facsimile 61 2 9211 8883 www.cnshipping.com.au	China Shipping Container Lines (CSCL)	Containers	China, Japan, Korea, Taiwan, Philippines (relay to Thailand, Indonesia, Mediterranean).
Contship Containerlines Ltd Wharf 10, Pirrama Road Pyrmont NSW 2009 Telephone 61 2 9367 3900 Facsimile 61 2 9552 1530 www.cpships.com	Contship Containerlines	Containers	SE Asia, Europe, New Zealand, Middle East, East Coast North America.
DLA (Australasia) Pty Ltd Suite 134, Jones Bay Wharf 19-21 Pirrama Road Pyrmont NSW 2009 Telephone 61 2 9325 7333 Facsimile 61 2 9325 7395	PT Djakarta Lloyd (Persero)	Containers	SE Asia.
Evergreen Marine Australia Pty Ltd Level 13 181 Miller Street North Sydney NSW 2060 Telephone 61 2 9936 5700 Facsimile 61 2 9936 5710 sydemcbiz@evergreen-marine.com.au www.evergreen-marine.com	Evergreen	Containers	Japan, Korea, Taiwan, China & Singapore, with relay services covering worldwide destinations/ports.
	Coastal Express Line North West Shipping Lloyd Triestino	Containers Containers Containers	Coastal Australia. Coastal Australia. Europe, Mediterranean, SE Asia, Indian Sub Continent.

Sydney Ports Corporation

Agents and Lines

Agent	Shipping Line	Cargo Handled	Trades Served
FESCO Lines Australia Pty Ltd Level 15 55 Clarence Street Sydney NSW 2000 Telephone 61 2 9249 1400 Facsimile 61 2 9262 5455 www.fesco.com.au	FESCO Australia Line (FAL) FESCO Australia North America Line (FANAL)	Containers Containers	Philippines, Hong Kong, Taiwan, China. US/Canada East & West Coasts, Tahiti, New Zealand.
Five Star Shipping & Agencies Co Pty Ltd Level 2 101 Sussex Street Sydney NSW 2000 Telephone 61 2 9373 9588 Facsimile 61 2 9299 7988 www.cosco.com.au	China Ocean Shipping Co (COSCO)	Containers	Japan, Korea, Taiwan, China, East Asia (relay to Europe, South Africa, SE Asia, Persian Gulf, USA).
Flinders Shipping Agency Pty Ltd Level 5, 9 Bligh Street Sydney NSW 2000 Telephone 61 2 8226 8000 Facsimile 61 2 9223 6055 www.hanjin.com	Hanjin Shipping Co Ltd	Containers	SE Asia, (relay to Europe, Scandinavia & the Indian Sub Continent) North & East Asia.
Globe Star Shipping Pty Ltd South Park Commercial 7-9 Kent Road Mascot NSW 2020 Telephone 61 2 9255 1900 Facsimile 61 2 8339 1655 www.globestar.com.au	ZIM Israel Navigation Co Ltd (Zim Line) Gold Star Line	Containers Containers	Japan/Korea/China, North America, Caribbean, Black Sea, Mediterranean, East Asia, SE Asia, Middle East, Africa, Indian Sub Continent, Sri Lanka, Myanmar, Cambodia, Guam, Saipan, Israel, Yap, Koror Worldwide.
Hamburg Sud Australia Pty Ltd 3/150 William Street East Sydney NSW 2011 Telephone 61 2 9373 1000 Facsimile 61 2 9373 1100 www.hamburgsud.com service@au.hamburgsud.com	Hamburg Sud	Containers	SE Asia, Europe, New Zealand, East Coast North America, West Coast North America, China.
Hapag Lloyd (Australia) Pty Ltd Level 8 447 Kent Street Sydney NSW 2000 Telephone 61 2 9265 7900 Facsimile 61 2 9266 0207 www.hlcl.com	Hapag Lloyd Container Line	Containers	SE Asia, Europe, New Zealand, Middle East, East Coast North America, North Asia.

Sydney Ports Corporation

Agents and Lines

Agent	Shipping Line	Cargo Handled	Trades Served
Hetherington Kingsbury Shipping Agency Suite 4 1/89-97 Jones Street Ultimo NSW 2007 Telephone 61 2 9281 4499 Facsimile 61 2 9281 1748 www.hksa.com.au	Hyundai Merchant Marine (HMM)	Containers	SE Asia, North & NE Asia & other Asian regions.
	Consortium Hispania Lines (CHL)	Containers	Mediterranean, New Zealand.
	Refrigerated Freight Lines (RFL)	Refrigerated Containers	South America, Africa
	Reef Shipping	Containers, Breakbulk cargoes	Noumea, Fiji, Samoa, Tonga, Vava'u, Niue, Cook Islands.
	Various Tramp Shipping Lines	Bulk, Breakbulk cargoes	Worldwide.
Inchcape Shipping Service Level 6 8 Help Street Chatswood NSW 2067 Telephone 61 2 9410 8888 Facsimile 61 2 9410 8800 www.iss-shipping.com	Islamic Republic of Iran Shipping Line (IRISL)	Containers	Iran.
	Western Bulk Carriers (Aust) Pty Ltd	Breakbulk	US/Canada West Coast, Worldwide.
	Dorval Tankships	Chemicals	Asia.
	BP Australia	Petroleum Products	Worldwide.
	Alcatel	Cable	Worldwide.
'K' Line (Australia) Pty Ltd 10 Bridge Street Sydney NSW 2000 Telephone 61 2 8274 9300 Facsimile 61 2 9251 0201 www.kline.com	'K' Line	Containers	North & East Asia, SE Asia, North America, West Coast South America, South Africa, Indian Sub Continent & East Africa.
	'K' Line	Motor Vehicles	Worldwide.
Lykes Lines Wharf 10 Pirrama Road Pyrmont NSW 2009 Telephone 61 2 9367 3900 Facsimile 61 2 9394 1695 www.cpships.com	Lykes Lines	Containers	China.
McArthur Shipping & Agency Co Pty Ltd Suite 5 1/89-97 Jones Street Ultimo NSW 2007 Telephone 61 2 9693 7777 Facsimile 61 2 9693 7788 www.mcaship.com.au	CCNI	Containers, Breakbulk	South America Far East.
	Various Tramp Shipping Lines	Containers, Breakbulk, Bulk Liquids, Forest Products	Worldwide.

Sydney Ports Corporation

Agents and Lines

Agent	Shipping Line	Cargo Handled	Trades Served
Maersk Australia Pty Ltd Level 19 201 Elizabeth Street Sydney NSW 2000 Telephone 61 2 9696 9666 Facsimile 61 2 9696 9684 ausmktgen@maersk.com www.maersksealand.com	Maersk Sealand	Containers	North Asia, SE Asia, Middle East, Pakistan, India, Sri Lanka, East Africa, West Africa, South Africa, Mediterranean, Europe, USA, Canada, Caribbean, South America, Central America, Mexico.
Marfret Shipping Agency Level 12 15-19 Bent Street Sydney NSW 2001 Telephone 61 2 8227 3050 Facsimile 61 2 9223 0042 www.marfret.com	Marfret Compagnie Maritime	Containers	Around the world service – Europe, North America East Coast, Pacific Islands, New Zealand, Singapore, Middle East.
Mediterranean Shipping Co (Aust) Pty Ltd Suite 532 5 Lime Street Sydney NSW 2000 Telephone 61 2 8270 4000 Facsimile 61 2 8270 4040 www.msc.com.au	MSC Mediterranean Shipping Company SA	Containers	North West Continental Europe/UK, Mediterranean, Africa/Indian Ocean Islands, Asia, North America, Caribbean, Mexico, West Coast South America, Indian Sub Continent, Middle East, Arabian Peninsula, New Zealand.
MISC Agencies (Aust) Pty Ltd 6/447 Kent Street Sydney NSW 2000 Telephone 61 2 9267 3233 Facsimile 61 2 9261 1857 www.miscaust.com.au	Malaysian International Shipping Corporation Berhad (MISC)	Containers	SE Asia, (relay to North Asia, Indian Sub Continent, Gulf Europe & South Africa.)
Mitsui OSK Lines (Australia) Pty Ltd 10/570 George Street Sydney NSW 2000 Telephone 61 2 9320 1600 Facsimile 61 2 9320 1601 sydmo@mol.com.au www.molpower.com	Mitsui OSK Lines (MOL)	Containers Motor vehicles	North & East Asia, South East Asia, Bay of Bengal/Indian Sub Continent, East & West Africa, Mauritius, Mediterranean & Continental Europe. North & SE Asia.
Neptune Shipping Agency (Australia) Pty Ltd Level 15 33-35 Bligh Street Sydney NSW 2000 Telephone 61 2 9235 2999 Facsimile 61 2 9235 2912 www.neptune.com	Neptune Shipping Lines (NSL)	Containers, Breakbulk	Pacific Islands.

Sydney Ports Corporation

Agents and Lines

Agent	Shipping Line	Cargo Handled	Trades Served
NYK Line (Australia) Pty Ltd 5/45 Clarence Street Sydney NSW 2000 Telephone 61 2 9248 1000 Facsimile 61 2 9299 7774 www.nyk.com	NYK Line	Containers Motor Vehicles	North & East Asia, SE Asia (relay to North America, Europe, Middle East Gulf, Indian Sub Continent). Japan, SE Asia.
OOCL (Australia) Pty Ltd Level 3 107 Mount Street North Sydney NSW 2060 Telephone 61 2 8912 8888 Facsimile 61 2 8912 8800 www.oocl.com	Orient Overseas Container Line (OOCL)	Containers	SE Asia, North & East Asia, relay to North America, Europe, Mediterranean, Middle East, Indian Sub Continent.
P&O Nedlloyd Pty Ltd 160 Sussex Street Sydney NSW 2000 Telephone 61 2 9364 8600 Facsimile 61 2 9364 8699 www.ponl.com	P&O Nedlloyd	Containers	Europe, New Zealand, East Coast North America, North Asia & East Asia, SE Asia, Middle East Gulf, Pakistan, West India, Sri Lanka, West Coast North America, Canada, Mexico, Africa, South America, Pacific Islands.
Pacific Asia Express Pty Ltd AWA Building 12/ 45-47 York Street Sydney NSW 2000 Telephone 61 2 9299 6588 Facsimile 61 2 9299 5385 gvl.pae@ilm.com.au www.pae.com.au	Pacific International Line (PIL) Pacific Express Service (PES) Pacific Direct Line (PDL)	Containers Containers, Breakbulk	SE Asia, Indian Sub Continent, Middle East, North Asia & East Asia, East Africa. Nauru, Honiara, Vila, Santo, Tonga, Samoa, Wallis Island, Funafuti.
RCL (Australia) Pty Ltd Suite 428 3 Smail Street Ultimo NSW 2007 Telephone 61 2 9219 8700 Facsimile 61 2 9211 5799 rclsyd@rclgroup.com www.rclgroup.com	Regional Container Lines (RCL)	Containers	North & East Asia, SE Asia, Indian Sub Continent.

Agent	Shipping Line	Cargo Handled	Trades Served
Safmarine Australia Pty Ltd 19th Floor 201-205 Elizabeth Street Sydney NSW 2000 Telephone 61 2 9696 9699 Facsimile 61 2 9696 9689 www.safmarine.com	Safmarine	Containers	South Africa including inland African destinations, East & West Coasts of Africa, Indian Ocean Islands, East Coast South America, East Coast USA, Canada, Mexico.
Seaway Agencies Pty Ltd Level 11 33 Bligh Street Sydney NSW 2000 Telephone 61 2 9232 8100 Facsimile 61 2 9232 1597 www.seaway.com.au	Hual A/S	Motor Vehicles	Europe, Africa, Pacific, Japan.
	Moana Shipping	Ro/Ro	Noumea, Wallis, Futuna, Tunalu.
	Kambara Kisen Kiwi Car Carriers	Containers Motor Vehicles	Japan, China, Japan, New Zealand.
Sofrana Shipping Agency Level 12 O'Connell House 15-19 Bent Street Sydney NSW 2000 Telephone 61 2 8227 3080 Facsimile 61 2 9221 8789 www.sofrana.com	Sofrana Unilines NZ Ltd	Containers	Noumea, Papua New Guinea, Vanuatu, Pacific Islands.
Swire Shipping Agencies 8 Spring Street Sydney NSW 2000 Telephone 61 2 9272 9333 Facsimile 61 2 9252 1442 www.swire.com www.chiefcontainerservices.com.au www.ngpl.com.au	New Guinea Pacific Line	Containers/Breakbulk	SE Asia, Papua New Guinea.
	Chief Container Service (CCS)	Containers	Papua New Guinea, Pacific Islands, New Zealand.
	Pacific Forum Line (PFL)	Breakbulk/Breakbulk Containers	Pacific Islands, SE Asia, Papua New Guinea.
Wallenius Wilhelmsen Lines Level 1, 33 Herbert Street St Leonards Sydney NSW 2000 Telephone 61 2 9200 2000 Facsimile 61 2 9966 0500 www.wlna.com	Wallenius Wilhelmsen Line A/S	Containers, Ro/Ro, Breakbulk Motor Vehicles	Scandinavia, Europe, East Coast North America, South Africa, New Zealand, SE Asia, North Asia, Worldwide.
Wills Shipping Pty Ltd Unit 1 33-35 Gibbes Street Chatswood NSW 2067 Telephone 61 2 9882 3441 Facsimile 61 2 9882 2628 willsship@willsship.com	Shipping Corporation of India Various Tramp Shipping Lines Pacific Orient Sea Transport	Containers/Breakbulk	Indian Sub Continent, Worldwide, Asia.

Port Service Providers

Name	Address	Telephone	Facsimile	Website/Email
Adsteam Harbour Sydney	7 Cooper Street Balmain NSW 2041	612 9818 9444	612 9818 9430	www.adsteam.com.au
Ausport Marine	Inter-terminal Access Road Port Botany NSW 2036	612 9316 7900	612 9316 7955	www.ausportmarine.com.au
Australian Maritime Services	PO Box 733 Botany NSW 1455	61 400 338 312	612 9666 1988	www.ams2000.com
BP Australia Ltd	GPO Box 5222BB Melbourne VIC 3001	613 9268 4111	613 9268 4638	www.bp.com.au
Bridgewater Australia Pty Ltd	Level 10 19-31 Pitt Street Sydney NSW 2000	612 9241 5588	612 9241 4490	www.bridgewateraust.com.au
Caltex Australia Limited	2 Solander Street Kurnell NSW 2019	612 9668 1250	612 9668 1900	www.caltex.com.au
Commercial Diving Services	PO Box 126 Dapto NSW 2530	612 4261 4200	612 4261 1233	www.commercialdiving.com.au
Gray Diving	37 Captain Cook Drive Caringbah NSW 2229	612 9526 2800	612 9524 3861	www.polarismarine.com.au
Leader Tugs Australia Pty Ltd	114 Western Crescent Gladesville NSW 2111	612 9816 5696	612 9879 6847	www.polarismarine.com.au
Lewis Tugs & Barges Pty Ltd	1 Mangrove Lane Taren Point NSW 2229	612 9524 0044	612 9540 1166	lewistugs@aol.com
Polaris Marine and Recovery Construction Pty Ltd	114 Western Crescent Gladesville NSW 2111	612 9816 5696	612 9879 6847	www.polarismarine.com.au
Shell Co. of Aust. Ltd	18 Redfern Street Hawthorn VIC 3122	613 9666 5444	613 8823 4800	www.shell.com.au
Shell Refining	Durham Street Rosehill NSW 2142	612 9897 8888	612 9897 8227	www.shell.com.au
Sydney Pilot Service	1a Marine Parade Watsons Bay NSW 2030	612 9337 6648	612 9337 4048	www.sydneypilotservice.com
The Diving Co (NSW) Pty Ltd	20-28 Montauban Avenue Seaforth NSW 2092	612 9907 9900	612 9049 4764	austsub@bigpond.com

Cruise Shipping Lines

Agent	Cruise Shipping Line	Cruise Destination
Adsteam Agency Pty Limited Level 12, 15-19 Bent Street Sydney NSW 2000 Telephone 612 8227 3000 info@syda.adsteam.com.au www.adsteammarine.com.au	Orient Line	Worldwide, South Pacific and Far East
Barwil Agencies (Australia) Pty Ltd Level 4, 370 Pitt Street Sydney NSW 2000 Telephone 612 9439 7223 Facsimile 612 9439 8587 sydney@barwil.com.au www.barwil.com	Holland America Line, Silversea Cruises, Peter Deilmann-Reederei Ltd, Saga Holidays, Marline Universal, Star Cruises, Cunard Seabourn, Norwegian Cruise Line	Worldwide
Beaufort Shipping Agency Co 120 Sussex Street Sydney NSW 2000 Telephone 612 9364 8960 Facsimile 612 9364 8999 operations@beaufortshipping.com www.beaufortshipping.com	P&O Cruises, Princess Cruises, Celebrity Cruises, Royal Caribbean Cruise Line	Worldwide
Cunard & Seabourn Cruise Line Level 1, 189 Kent Street Sydney NSW 2000 Telephone 612 9250 6600 Facsimile 612 9250 6699 www.wlcl.com.au	Cunard, Seabourn Cruise Line	Worldwide
Hapag Lloyd Level 8, 447 Kent Street Sydney NSW 2000 Telephone 612 9265 7900 Facsimile 612 9266 0207 www.hlcl.com	Hapag-Lloyd Kreuzfahrten	Worldwide
Mitsui OSK Lines (Mol) Level 10, 570 George Street Sydney NSW 2000 Telephone 612 9320 1600 Facsimile 612 9320 1601 www.molpower.com	Mitsui OSK Passenger Line Ltd	Worldwide
NYK Line (Aust) Pty Ltd Level 5, 45 Clarence Street Sydney NSW 2000 Telephone 612 9248 1000 Facsimile 612 9299 7774 www.nyk.com	Crystal Cruises Inc, NYK Cruises Pty Ltd	Worldwide

Agent	Cruise Shipping Line	Cruise Destination
P&O Cruises Level 7, 203 Pacific Highway St Leonards NSW 2065 Telephone 612 8424 8800 Facsimile 612 8424 9161 www.pocruises.com.au	P&O Cruises	Australia, Pacific Islands
Silverseas Cruises 72 Ann Street Surry Hills NSW 2010 Telephone 1300 880 943 Facsimile 612 9281 9542 www.silverseas.com.au	Silverseas Cruises	Worldwide

PORT BOTANY

SYDNEY PORTS CORPORATION



Section 2

- 66** Customs Brokers
- 66** Freight Forwarders
- 67** Rail Transport Operators
- 68** Road Transport Operators
- 68** Cold Storage
- 69** Container Parks
- 72** Bulk Liquid Storage and Services
- 73** Other Ship and Cargo Service Providers
- 74** Marine Insurers
- 75** Maritime Lawyers
- 75** NSW Government Agencies
- 75** Federal Government Agencies
- 75** Sydney Consulates and Trade Missions
- 76** Marine Surveyors
- 77** Mobile Crane and Handling Equipment
- 78** Shipping Providers
- 79** Shipbrokers
- 80** Shipchandlers
- 81** Container Leasing Companies
- 82** Maritime Organisations
- 83** Industry/Exporting Organisations

Customs Brokers

For information on customs brokers in NSW please refer to the Customs Brokers and Forwarders Council of Australia, www.cbfa.com.au.

Suite 307, 39 Doody Street
Alexandria NSW 2015
Telephone 612 9669 4788
Facsimile 612 9669 4799

Freight Forwarders

For information on freight forwarders in NSW please refer to the Australian Federation of International Forwarders Ltd, www.aiff.asn.au.

Westfield Office Tower
Suite 403, Level 3, 152 Bunnerong Road
Eastgardens NSW 2036
Telephone 612 9314 3055
Facsimile 612 9314 3116

Rail Transport Operators

Name	Address	Telephone	Facsimile
Australian Railroad Group	The Crescent Auburn NSW 2144 www.arg.net.au	612 9646 4015	612 9646 3009
Lachlan Valley Rail Freight	9 Stonny Batter Road Minto NSW 2566 valley@tgp.com.au	612 9824 6600	612 9824 6888
Pacific National	Level 6 15 Blue Street North Sydney NSW 2060 www.pacificnational.com.au	612 8484 8000	612 8484 8154
Patrick Port Services	10A Grand Avenue Camellia NSW 2142 www.patrick.com.au	612 9684 1222	612 9684 2527
RailCorp	PO Box K349 Haymarket 1238 www.staterail.nsw.gov.au	612 8202 2000	612 8202 2111
Silverton Rail	Level 5 20 Charles Street Parramatta NSW 2124 www.silverton.net.au	612 9633 5777	612 9633 5766
Southern Shorthaul Railroad	52 Copeland Road Engadine NSW 2233 www.ssrail.com.au	61 411 052 116	612 9520 9951

Road Transport Operators

For information on road transport operators in NSW please refer to the New South Wales Road Transport Association Inc, www.nswrta.com.au.

Level 4
162 Goulburn Street
Darlinghurst NSW 2010
Telephone 612 9267 8222
Facsimile 612 9267 8388

Cold Storage

For information on warehouse and transport operators involved in the storage, distribution and transportation of temperature controlled products in NSW please refer to the Refrigerated Warehouse and Transport Association of NSW, www.rwta.com.au.

Level 4, 162 Goulburn Street
Darlinghurst NSW 2010
Telephone 612 9267 8789
Facsimile 612 9267 8802

Sydney Ports Corporation

Container Parks

Name	Website	Telephone	Facsimile
Botany Area			
Cargolink 12 Penrhyn Road Port Botany NSW 2036	www.patrick.com.au	612 9695 7260	612 9695 7261
FCL Interstate Transport Services Canal Road St Peters NSW 2044	www.fcl.com.au	612 9516 4744	612 9519 4357
MCS Park No.1 9-13 McPherson Street Banksmeadow NSW 2019		61 131 627	612 9316 6282
MCS Transport 20 Canal Road St Peters NSW 2044		61 131 627	612 9582 7150
MCS Intermodal 20 Canal Road St Peters NSW 2044		61 131 627	612 9582 7150
Patrick Logistics Botany Park 60 Friendship Road Port Botany NSW 2036	www.patrick.com.au	612 9316 6611	612 9700 1543
P&O Port Botany Container Park/Rail Facility 1890 Botany Road Port Botany NSW 2036	www.poports.com.au	612 9578 8666	612 9316 5834
MT Movements Pty Ltd 1-9 Friendship Road Port Botany NSW 2036		612 9316 8888	612 99316 6622
VOPAK Dangerous Goods Container Park 44 Friendship Road Port Botany NSW 2036		612 9666 4455 (facility to commence operations in 2005)	

Container Parks

Name	Website	Telephone	Facsimile
Western Sydney			
AWH (Australian Wool Handlers) Yennora Wool Distribution Park Dennistoun Avenue Guildford NSW 2161		612 9790 9000	612 9892 1111
CRT Group Store No 4 Yennora Wool Centre Byron Road Guildford NSW 2161	www.crtgroup.com.au	612 8724 1900	612 8724 1904
Mannway Transport & Distribution Terminal 246 Millers Road Villawood NSW 2163	www.mannway.com.au	612 8707 2300	612 8707 2377
McArthur Intermodal Shipping Terminal 9 Stonny Batter Road Minto NSW 2566	www.mist.com.au	612 9603 0900	612 9603 0950
McArthur Container Park 9 Swaffom Road Minto NSW 2566		612 9824 6529	612 9824 6522
Pacific National 20 Dasea Street Chullora NSW 2190	www.PacificNational.com.au	612 9707 8401	612 9707 1624
Pack-Tainers Pty Ltd Store 5 Yennora Distribution Park Loftus Road Guildford NSW 2161		612 9681 2255	612 9892 1134
Patrick Port Services 10A Grand Avenue Camellia NSW 2142	www.patrick.com.au	612 9638 6055	612 9638 2895
Western Container Service 23-25 Gould Street Enfield NSW 2136		612 9742 6302	612 9642 5008
Country NSW			
Auscott Ltd Oxley Highway Warren NSW 2824	www.auscott.com.au	612 6883 7306	612 6847 4399
Dunavant Warehousing Pty Ltd Newell Highway Moree NSW 2400	www.dunavant.com.au	612 6752 4655	612 6752 4568

Name	Website	Telephone	Facsimile
Country NSW (continued)			
FCL Interstate Transport Services P/L 91 Gerty Street Blayney NSW 2799	www.fcl.com.au	612 6368 3433	612 6368 2662
FCL Interstate Transport Services P/L Goobang Junction Parkes NSW 2870	www.fcl.com.au	612 6863 5111	612 6862 5934
Hills Transport Tamworth Freight Terminal Old Gunnedah Road Tamworth NSW 2340	www.hillstransport.com.au	612 6762 5561	612 6762 5568
Inland Container Terminals Talbragar Street Dubbo NSW 2830		612 6885 2341	612 6881 8788
Inland Packing & Storage Railway Street North Narrabri NSW 2390	www.ipslogistics.com.au	612 6792 4827	612 6792 4829
Namoi Cotton Co-Operative Ltd Pillaga Road Narrabri NSW 2390	www.namoicotton.com.au	612 6790 3000	612 6790 3087
Patrick PortLink Griffith Rail Yard Railway Street Griffith NSW 2680	www.patrick.com.au	612 6964 2500	612 6964 5565
Patrick PortLink Cnr Bomen and Dampier Street Wagga Wagga NSW 2650	www.patrick.com.au	612 6971 7102	612 6971 7108
P&O Trans Australia Newell Highway Narrabri NSW 2390	www.poports.com.au	612 6792 4640	612 6792 1800
R & H Transport Services (Toll Logistics) Old Maitland Road Sandgate NSW 2304	www.toll.com.au	612 4960 0001	612 4960 2351
Toll SPD Newcastle 38 Robertson Street Carrington NSW 2294	www.toll.com.au	612 4962 7800	612 4962 7850
Sutherland's Transport Hovell Street Cootamundra NSW 2590		612 6942 4177	612 6942 4792

Bulk Liquid Storage and Services

Name	Address	Telephone	Facsimile
Elgas	Level 1 10-18 Cliff Street Milsons Point NSW 2061 www.elgas.com.au	612 9927 3200	612 9925 0454
Eurotainer Tank Containers	Suite 1, 20 Perouse Road Randwick NSW 2031 mhcs@bigpond.net.au	612 9326 7811	612 9326 7211
Orica Ltd Botany	16-20 Beauchamp Road Matraville NSW 2036 www.orica.com	612 9352 2111	612 9352 2847
Origin Energy	47 Friendship Road Port Botany NSW 2036 www.originenergy.com.au	612 9316 3888	612 9316 4614
Terminals Pty Ltd	45 Friendship Road Port Botany NSW 2036 deng@terminalspl.com.au	612 9316 9743	612 9316 9742
Vopak Terminals Australia	49 Friendship Road Port Botany NSW 2036 www.vopak.com	612 9666 4455	612 9694 1182

Other Ship and Cargo Service Providers



Marine Insurers

Name	Website	Telephone	Facsimile
ACE Insurance Ltd 28-34 O'Connell Street Sydney NSW 2000	www.aceinsurance.com.au	612 9335 3200	612 9221 3513
Associated Marine Insurers Agents Level 9 34 Hunter Street Sydney NSW 2000	www.associatedmarine.com.au	612 9233 4177	612 9231 6808
CGU Insurance 10 Spring Street Sydney NSW 2000	www.cgu.com.au	612 8224 4000	612 9222 2981
GIO General Ltd GPO Box 9835 Melbourne VIC 3001	www.gio.com.au	61 13 1010	61 1300 724 872
Lumley General Insurance Limited 309 Kent Street Sydney NSW 2000	www.lumley.com.au	612 9248 1111	612 9248 1122
QBE Insurance (Australia) Limited 85 Harrington Street Sydney NSW 2000	www.qbemm.com.au	612 9375 4444	612 9375 4938

Sydney Ports Corporation

Maritime Lawyers

For information on maritime lawyers in Australia and New Zealand please refer to www.mlaanz.org.

NSW Government Agencies

For a list of all NSW Government Departments and Agencies please refer to www.directory.nsw.gov.au.

Federal Government Agencies

For a list of all Federal Government Departments and Agencies please refer to www.gold.gov.au.

Sydney Consulates and Trade Missions

For a list of all Sydney Consulates please refer to www.dfat.gov.au

Marine Surveyors

Name	Address	Telephone	Facsimile
Australian Maritime Operations and Logistics	Unit 16, 14 Polo Avenue Mona Vale NSW 2103	612 9997 2203	612 9997 8925
Captain A.M. Downes	6/8 Earl Street Mosman NSW 2088	612 9969 1444	612 9969 1444
Christy & Griffin	Gateway House Christy Drive Port Kembla NSW 2505 www.christieandgriffin.com.au	612 4274 4279	612 4274 4158
Clifford Marine Services	PO Box 279 St Leonards NSW 1590	612 9958 3624	612 9958 5741
Conway Marine Surveyors & Consultants	97 Staff Road Cordeaux Heights NSW 2526	612 4272 7770	612 4272 7780
Eastern Seaboard Marine Services	Unit 16, 14 Polo Avenue Mona Vale NSW 2103	612 9997 2203	612 9997 8925
Gibson Minto & Aiton Pty Ltd	PO Box 195 Pymont NSW 2009 surveyors@gibsonminto-aiton.com.au	612 9810 0501	612 9555 1532
Hepburn Marine Surveys	16 Yeramba Street Turramurra NSW 2074 dhepburn@bigpond.net.au	612 9440 3278	612 9440 3279
Marine Tech Australia	PO Box 548 Randwick NSW 2031	612 9345 5407	612 9345 5408
Mathias & Associates Pty Ltd	1 Vickery Avenue Carlingford NSW 2118	612 9871 1026	612 9871 5824
Peter Burge & Associates	93 Greenhills Street Croydon Park NSW 2133 peterburge@optusnet.com.au	612 9799 8152	612 9799 8152
PJ Wiley & Associates	208 Kissing Point Road Dundas NSW 2117 cargosurvey@bigpond.com	612 9684 1272	612 9638 3772
Pyett & Co	357 Maroubra Road Maroubra NSW 2035 dpyett@bigpond.net.au	612 9344 8589	612 9344 8607
SGS	Unit 7, 110 Silverwater Road Silverwater 2128 www.au.sgs.com	612 8748 0000	612 8748 0099

Mobile Crane and Handling Equipment

Name	Website	Telephone	Facsimile
Botany Crane & Forklift Services Pty Ltd	www.botanycranes.com.au 1581 Botany Road Botany NSW 2019	612 9666 6366	612 9666 3601
Wilson Mobile Cranes 10 Bessemer Street Blacktown NSW 2148	www.wilsoncranes.com.au	612 9831 2055	612 9831 2366

Shipping Providers

Name	Telephone	Facsimile
Aggreko P/L 22-24 Sleigh Place Wetherill Park NSW 2164	61 2 9604 5166	61 2 9725 2974
Pardy Providers Pty Ltd Store 15, Building J Sydney Markets Flemington NSW 2129	61 2 9764 3855	61 2 9764 3211

Shipbrokers

Name	Address	Telephone	Facsimile
A.P. Cramley & Co	Level 3 12 Mount Street North Sydney NSW 2060	612 9956 6588	612 9956 6561
Asiaworld Shipping Services Pty Ltd	Level 1, Suite 9 401 Pacific Highway Artarmon NSW 2064 www.asiaworld.com.au	612 9906 6372	612 9906 1874
Austral Chartering Pty Ltd	Level 12 157 Walker Street North Sydney NSW 2060 www.austchart.com.au	612 9954 0200	612 9954 0202
Bulk Consultants Pty Ltd	32 Macdonald Street Paddington NSW 2021 nickr@sydney.cc	612 9380 6491	612 9380 6492
Gannet Pty Ltd	66 King Street Sydney NSW 2000	612 9299 2125	612 9290 3513
Simpson Spence & Young	Level 21 1 York Street Sydney NSW 2000 www.ssyonline.com	612 9252 1711	612 9252 1716
Seawise Australia Pty Ltd	Suite 403 St Thomas House 781 Pacific Highway Chatswood NSW 2067 www.seawise.com.au	612 9415 3400	612 9411 7778

Shipchandlers

Name	Address	Telephone	Facsimile
Southern Cross	Suite 5, 149 Brebner Drive West Lakes SA 5021 (opening offices in NSW in 2004)	618 8235 1052	618 8235 0852
Wiltrading Pty Ltd	36 Doody Street Alexandria NSW 2015	612 9667 4599	612 9669 1181

Container Leasing Companies

Name	Address	Telephone	Facsimile
Cronos Containers	Suite 1607 44 Market Street Sydney NSW 2000 www.cronos.com	612 9290 1455	612 9290 2131
GE SeaCo Australia Pty Ltd	Level 23 1 Market Street Sydney NSW 2000 www.geseaco.com	612 9267 9699	612 9267 9120
Container Corporation Australia Pty Ltd	19 Swaffham Road Minto NSW 2566	612 9824 6529	612 9824 6522
Royal Wolf	Suite 202, Level 2 22-28 Edgeworth David Avenue Hornsby NSW 2077	612 9482 3466	612 9482 3477
Textainer Equipment	Suite 702 161 Walker Street North Sydney NSW 2060 www.textainer.com	612 9922 6677	612 9922 6877
Transamerica Leasing P/L	Level 7 33 Berry Street North Sydney NSW 2060	612 9957 1922	612 9922 5414

Maritime Organisations

Name	Address	Telephone	Facsimile
Association of Australian Ports & Marine Authorities	Level 16, 1 York Street Sydney NSW 2000 www.aapma.org.au aapma@aapma.org.au	612 9247 7581	612 9247 7585
ABS Pacific	Suite 303, Level 3 53 Walker Street North Sydney NSW 2060 www.eagle.org	612 9956 7322	612 9954 4233
Shipping Australia Ltd	Level 6, 131 York Street Sydney NSW 2000	612 9266 9900	612 9268 0230
Australian Peak Shippers Assoc.	68-72 York Street South Melbourne VIC 3205	613 9690 9080	613 9690 9087
Australian Shipowners Association	Level 7, 6 Underwood Street Sydney NSW 2000	612 9258 8009	612 9241 3456
Bureau Veritas	Level 1, 30 Boothby Street Kedron QLD 4031 www.bureauveritas.com	617 3359 6666	617 3359 6755
Det Norske Veritas	Level 19, 100 Miller Street North Sydney NSW 2060 www.dnv.com sydney.station@dnv.com	612 9922 1966	612 9929 8792
Germanischer Lloyd	88 Pitt Street Sydney NSW 2000 www.gl-group.com	612 9233 1119	612 9233 3315
(ICHCA) C/O Asiaworld Shipping Services Pty Ltd	Suite 9, 401 Pacific Highway Artarmon NSW 2064	612 9906 6372	612 9906 1874
Lloyds Register of Shipping	Level 6, 44 Market Street Sydney NSW 2000 www.lr.org sydney@lr.org	612 9262 1424	612 9290 1445
Mission to Seafarers	320 Sussex Street Sydney NSW 2000 sydney@mts.org.au	612 9264 9900	612 9264 9318
NSW Cargo Facilitation Committee (C/O Sydney Ports Corporation)	Level 8, 207 Kent Street Sydney NSW 2000	612 9296 4999	612 9296 4742
Sea Freight Council of NSW	Level 12, 83 Clarence Street Sydney NSW 2001 www.seafreightnsw.com.au	612 9350 8116	612 9350 8199

Industry/Exporting Organisations

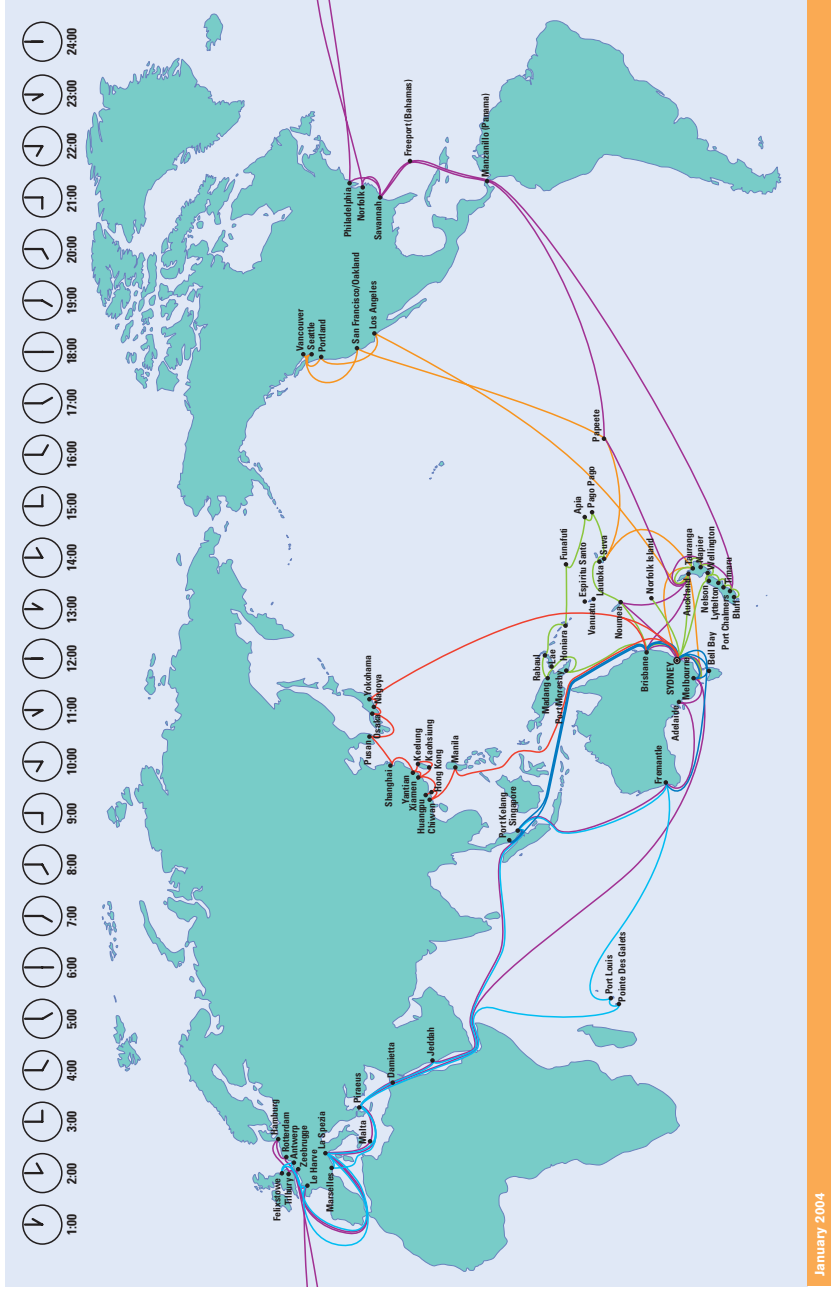
Name	Address	Telephone	Facsimile
Austrade	Level 23, 201 Kent Street Sydney NSW 2000 www.austrade.gov.au	612 9390 2000	612 9390 2024
Australian Business Limited	140 Arthur Street North Sydney NSW 2060 www.australianbusiness.com.au memberservices@australianbusiness.com.au	612 9458 7500	612 9923 1166
Australian Cotton Shippers Association	PO Box 1930 North Sydney NSW 2059 www.australiancottonshippers.com.au	612 9929 8199	612 9929 5477
Australian Industry Group	Level 4, 51 Walker Street North Sydney NSW 2060 www.aigroup.asn.au info@aigroup.asn.au	612 9466 5566	612 9466 5599
Australian Institute of Export (NSW)	Level 12, 83 Clarence Street Sydney NSW 2000 www.aiex.com.au	612 9350 8170	612 9262 3262
Australian Meat Industry Council	Level 2, 25-27 Albany Street Crows Nest NSW 2065 www.amic.org.au	612 9086 2200	612 9086 2201
Australian Wine and Brandy Corp	PO Box 2733 Kent Town SA 5071 www.awbc.com.au	618 8228 2000	618 8228 2022
Australian Wine Export Council	PO Box 2733 Kent Town SA 5071 www.awbc.com.au	618 8228 2040	618 8228 2048
AWB Ltd	Level 18, 1 Market Street Sydney NSW 2000 www.awb.com.au	612 9265 1333	612 9261 3493
Australian Wool Innovation Ltd	Level 5, 16-20 Barrack at Sydney NSW 2000 www.woolinnovation.com.au	612 9299 5155	612 9299 9880
Chartered Institute of Transport Logistics	PO Box 606 Epping NSW 1710	612 9868 6423	612 9876 2536
Cotton Australia Limited	Level 2, 490 Crown Street Surry Hills NSW 2010 www.cottonaustralia.com.au	612 9360 8500	612 9360 8555

Name	Address	Telephone	Facsimile
Customs & Forwarding	Unit 7 2-12 Beauchamp Road Botany NSW 2019	612 9316 9466	612 9316 9141
Export Centre, Parramatta	Level 3, 470 Church Street North Parramatta NSW 2151 www.theexportcentre.com.au	612 9630 4604	612 9630 4650
Export Finance & Insurance Corp.	Export House, 22 Pitt Street Sydney NSW 2000 www.efic.com.au	612 9201 2111	612 9251 3851
Federal Chamber of Automotive Industries	Level 6, 10 Rudd Street Canberra ACT 2601 www.fcmai.com.au	612 6247 3811	612 6248 7673
Graincorp	Level 10, 51 Druitt Street Sydney NSW 2000 www.graincorp.com.au	61 1800 809 482	612 9325 9180
Horticulture Australia	Level 1 50 Carrington Street Sydney NSW 2000 www.horticulture.com.au	612 8295 2300	612 8295 2399
Meat and Livestock Australia	Level 1 165 Walker Street North Sydney NSW 2060 www.mla.com.au	612 9463 9333	612 9463 9393
National Council of Wool Selling Brokers	Level 2, 470 Collins Street Melbourne VIC 3000	613 9629 6287	613 9614 6529
NSW Farmers Association	Level 10, 255 Elizabeth Street Sydney NSW 2000 www.nswfarmers.org.au	612 8251 1700	612 8202 7255
NSW Minerals Council	Level 12, 59 Goulburn Street Sydney NSW 2000	612 8202 7200	612 8202 7255
NSW State Chamber of Commerce	Level 12 83 Clarence Street Sydney NSW 2000	612 9350 8100	612 9350 8199
Pulse Australia	Level 3 100 New South Head Road Edgecliff NSW 2027 www.pulseaus.com.au	612 9327 8588	612 9327 1633

Name	Address	Telephone	Facsimile
Sydney International College of Business Ltd	552 George Street Sydney NSW 2000	612 9267 2844	612 9267 2944
Timber & Building Materials Association (NSW) Ltd – (TABMA)	13-29 Nichols Street Surry Hills NSW 2010 www.tabma.com.au info@tabma.com.au	612 9360 3088	612 9360 3464
Tradegate	Level 6, 131 York Street Sydney NSW 2000 www.tradegate.com.au	612 9283 1144	612 9283 3900



World Trade Routes served by Sydney Ports



January 2004

Level 8, 207 Kent Street
Sydney NSW 2000, Australia

PO Box 25
Millers Point, NSW 2000, Australia

Telephone 61 2 9296 4999
Facsimile 61 2 9296 4742
enquiries@sydneyports.com.au
www.sydneyports.com.au

Central Booking Service (24 hours, 7 days)

Telephone 61 2 9296 4800
Facsimile 61 2 9296 4812

Emergency Response (24 hours, 7 days)

In the case of a port-related emergency
Telephone 61 2 9296 4000

Disclaimer The information contained in this publication is produced in good faith and according to the knowledge available to Sydney Ports Corporation at the time of publication. No warranty is given or representation made as to its accuracy.

Acknowledgement Sydney Ports Corporation acknowledges the support and assistance of the Sydney port community in producing this Handbook. The web version of the Handbook is available at www.sydneyports.com.au/Media and Publications.